

DATASHEET

SEC11C Rabbit Polyclonal Antibody

CAT. NO. APA19176

KEY FEATURES

Target	SEC11C	Source / Host	Rabbit
Reactivity	Mouse	Clonality	Polyclonal
Applications	WB	Conjugation	Unconjugated
Form / Buffer	Liquid in 0.42% Potassium phosphate, 0.87% Sodium chloride, pH 7.3, 30% glycerol, and 0.01% sodium azide.		Storage at -20°C

BACKGROUND

Enables serine-type endopeptidase activity. Involved in signal peptide processing. Located in endoplasmic reticulum membrane. Part of signal peptidase complex.

APPLICATION

To ensure optimal assay performance, AREX recommends conducting reagent titration tailored to each testing system for optimal detection results.

WB	1:500 - 1:1000
----	----------------

*Results are sample-specific. Please refer to your local assay conditions and test parameters for reference.

PRODUCT OVERVIEW

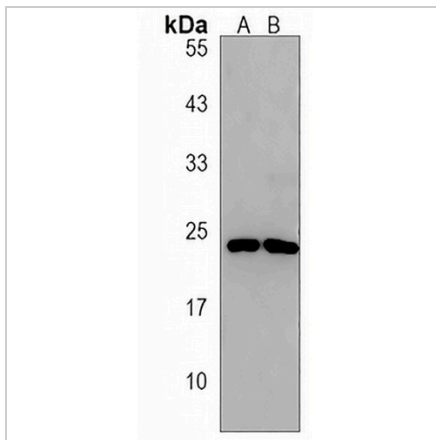
Description	Rabbit polyclonal antibody to SEC11C
Specificity	Recognizes endogenous levels of SEC11C protein.
Antibody Type	Primary antibody
Immunogen	KLH-conjugated synthetic peptide encompassing a sequence within the Central region of human SEC11C. The exact sequence is proprietary.
Purification	The antibody was purified by immunogen affinity chromatography.
Molecular Weight	Predicted: 21 kD; Observed: 22 kD
Form/Buffer	Liquid in 0.42% Potassium phosphate, 0.87% Sodium chloride, pH 7.3, 30% glycerol, and 0.01% sodium azide.
Alternative Names	SEC11L3; SPC21; SPCS4C; Signal peptidase complex catalytic subunit SEC11C; Microsomal signal peptidase 21 kDa subunit; SPase 21 kDa subunit; SEC11 homolog C; SEC11-like protein 3; SPC21
Gene Symbol	SEC11C
Entrez Gene	66286(Mouse)
SwissProt	Q9D8V7(Mouse)

*AREX continuously optimizes our products. Webpage content may not reflect the latest updates. For inquiries, please contact info@arexbio.com or your local distributor.

*Clone Number, Reactivity, Source/Host and Clonality can be found in the product name and Key Features section above.

DATASHEET**SEC11C Rabbit Polyclonal Antibody**

CAT. NO. APA19176

DATA

Western blot analysis of SEC11C expression in HepG2 (A), RPMI 8226 (B) whole cell lysates. (Predicted band size: 21 kD; Observed band size: 22 kD)

STORAGE

Store at 4°C short term. For long term storage, store at -20°C, avoiding freeze/thaw cycles.

NOTE

For Research Use Only. Not for diagnostic, therapeutics, prophylactic or in vivo use.