

DATASHEET

HNRNPA1L2 Rabbit Polyclonal Antibody

CAT. NO. APA19178

KEY FEATURES

| | | | |
|---------------|---|---------------|---------------------|
| Target | HNRNPA1L2 | Source / Host | Rabbit |
| Reactivity | Human | Clonality | Polyclonal |
| Applications | WB, IHC | Conjugation | Unconjugated |
| Form / Buffer | Liquid in 0.42% Potassium phosphate, 0.87% Sodium chloride, pH 7.3, 30% glycerol, and 0.01% sodium azide. | | Storage at -20°C |

BACKGROUND

Involved in the packaging of pre-mRNA into hnRNP particles, transport of poly(A) mRNA from the nucleus to the cytoplasm and may modulate splice site selection.

APPLICATION

To ensure optimal assay performance, AREX recommends conducting reagent titration tailored to each testing system for optimal detection results.

| | |
|-----|----------------|
| WB | 1:500 - 1:1000 |
| IHC | 1:50 - 1:200 |

*Results are sample-specific. Please refer to your local assay conditions and test parameters for reference.

PRODUCT OVERVIEW

| | |
|-------------------|--|
| Description | Rabbit polyclonal antibody to HNRNPA1L2 |
| Specificity | Recognizes endogenous levels of HNRNPA1L2 protein. |
| Antibody Type | Primary antibody |
| Immunogen | KLH-conjugated synthetic peptide encompassing a sequence within the N-terminal region of human HNRNPA1L2. The exact sequence is proprietary. |
| Purification | The antibody was purified by immunogen affinity chromatography. |
| Molecular Weight | Predicted: 34 kD; Observed: 34 kD |
| Form/Buffer | Liquid in 0.42% Potassium phosphate, 0.87% Sodium chloride, pH 7.3, 30% glycerol, and 0.01% sodium azide. |
| Alternative Names | HNRNPA1L; Heterogeneous nuclear ribonucleoprotein A1-like 2; hnRNP A1-like 2; hnRNP core protein A1-like 2 |
| Gene Symbol | HNRNPA1L2 |
| Entrez Gene | 144983(Human) |
| SwissProt | Q32P51(Human) |

*AREX continuously optimizes our products. Webpage content may not reflect the latest updates. For inquiries, please contact info@arexbio.com or your local distributor.

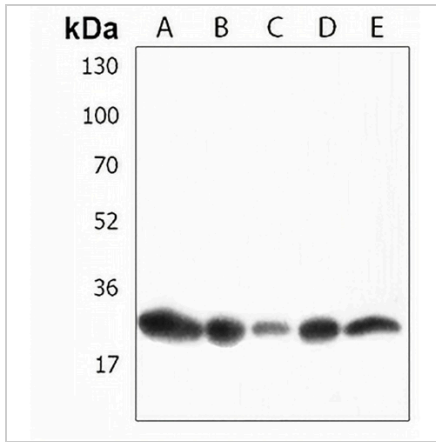
*Clone Number, Reactivity, Source/Host and Clonality can be found in the product name and Key Features section above.

DATASHEET

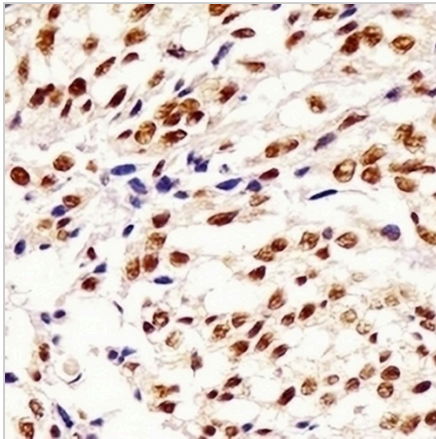
HNRNPA1L2 Rabbit Polyclonal Antibody

CAT. NO. APA19178

DATA



Western blot analysis of HNRNPA1L2 expression in HeLa (A), Jurkat (B), MCF7 (C), HepG2 (D), K562 (E) whole cell lysates. (Predicted band size: 34 kD; Observed band size: 34 kD)



Immunohistochemical analysis of HNRNPA1L2 staining in human breast carcinoma formalin fixed paraffin embedded tissue section. The section was pre-treated using heat mediated antigen retrieval with sodium citrate buffer (pH 6.0). The section was then incubated with the antibody at room temperature and detected using an HRP conjugated compact polymer system. DAB was used as the chromogen. The section was then counterstained with haematoxylin and mounted with DPX.

STORAGE

Store at 4°C short term. For long term storage, store at -20°C, avoiding freeze/thaw cycles.

NOTE

For Research Use Only. Not for diagnostic, therapeutics, prophylactic or in vivo use.