

DATASHEET

SRGAP2 Rabbit Polyclonal Antibody

CAT. NO. APA19179

KEY FEATURES

Target	SRGAP2	Source / Host	Rabbit
Reactivity	Human, Mouse	Clonality	Polyclonal
Applications	WB	Conjugation	Unconjugated
Form / Buffer	Liquid in 0.42% Potassium phosphate, 0.87% Sodium chloride, pH 7.3, 30% glycerol, and 0.01% sodium azide.		Storage at-20°C

BACKGROUND

Postsynaptic RAC1 GTPase activating protein (GAP) that plays a key role in neuronal morphogenesis and migration mainly during development of the cerebral cortex that plays a key role in neuronal morphogenesis and migration mainly during development of the cerebral cortex . Regulates excitatory and inhibitory synapse maturation and density in cortical pyramidal neurons . SRGAP2/SRGAP2A limits excitatory and inhibitory synapse density through its RAC1-specific GTPase activating activity, while it promotes maturation of both excitatory and inhibitory synapses through its ability to bind to the postsynaptic scaffolding protein HOMER1 at excitatory synapses, and the postsynaptic protein GPHN at inhibitory synapses .

APPLICATION

To ensure optimal assay performance, AREX recommends conducting reagent titration tailored to each testing system for optimal detection results.

WB	1:500 - 1:1000
----	----------------

*Results are sample-specific. Please refer to your local assay conditions and test parameters for reference.

PRODUCT OVERVIEW

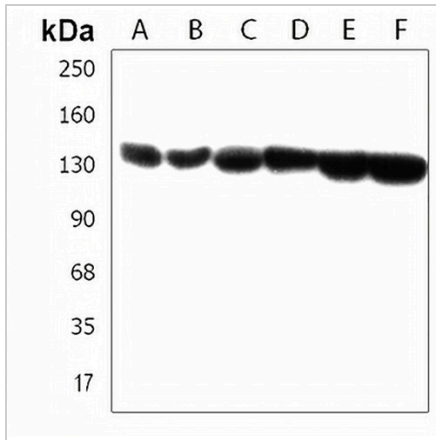
Description	Rabbit polyclonal antibody to SRGAP2
Specificity	Recognizes endogenous levels of SRGAP2 protein.
Antibody Type	Primary antibody
Immunogen	KLH-conjugated synthetic peptide encompassing a sequence within the C-terminal region of human SRGAP2. The exact sequence is proprietary.
Purification	The antibody was purified by immunogen affinity chromatography.
Molecular Weight	Predicted: 120 kD; Observed: 140 kD
Form/Buffer	Liquid in 0.42% Potassium phosphate, 0.87% Sodium chloride, pH 7.3, 30% glycerol, and 0.01% sodium azide.
Alternative Names	ARHGAP34; FNBP2; KIAA0456; SRGAP2A; SLIT-ROBO Rho GTPase-activating protein 2; srGAP2; Formin-binding protein 2; Rho GTPase-activating protein 34
Gene Symbol	SRGAP2
Entrez Gene	23380(Human); 14270(Mouse)
SwissProt	O75044(Human); Q91Z67(Mouse)

*AREX continuously optimizes our products. Webpage content may not reflect the latest updates. For inquiries, please contact info@arexbio.com or your local distributor.

*Clone Number, Reactivity, Source/Host and Clonality can be found in the product name and Key Features section above.

DATASHEET**SRGAP2 Rabbit Polyclonal Antibody**

CAT. NO. APA19179

DATA

Western blot analysis of SRGAP2 expression in MCF7 (A), DU145 (B), SW480 (C), SHSY5Y (D), human cerebellum (E), mouse brain (F) whole cell lysates. (Predicted band size: 120 kD; Observed band size: 140 kD)

STORAGE

Store at 4°C short term. For long term storage, store at -20°C, avoiding freeze/thaw cycles.

NOTE

For Research Use Only. Not for diagnostic, therapeutics, prophylactic or in vivo use.