

DATASHEET

Pendrin Rabbit Polyclonal Antibody

CAT. NO. APA19181

KEY FEATURES

Target	Pendrin	Source / Host	Rabbit
Reactivity	Human, Rat	Clonality	Polyclonal
Applications	WB	Conjugation	Unconjugated
Form / Buffer	Liquid in 0.42% Potassium phosphate, 0.87% Sodium chloride, pH 7.3, 30% glycerol, and 0.01% sodium azide.		Storage at -20°C

BACKGROUND

Sodium-independent transporter of chloride and iodide . Mediates electroneutral chloride-bicarbonate, chloride-iodide and chloride-formate exchange with 1:1 stoichiometry . Mediates electroneutral iodide-bicarbonate exchange .

APPLICATION

To ensure optimal assay performance, AREX recommends conducting reagent titration tailored to each testing system for optimal detection results.

WB	1:500 - 1:1000
----	----------------

*Results are sample-specific. Please refer to your local assay conditions and test parameters for reference.

PRODUCT OVERVIEW

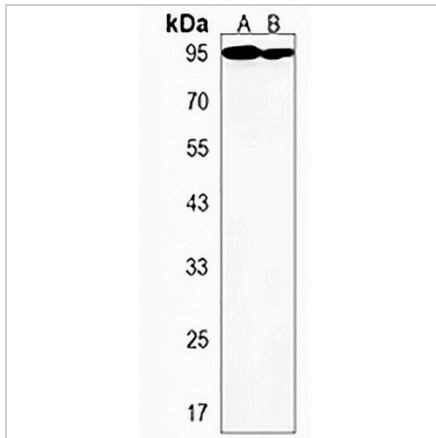
Description	Rabbit polyclonal antibody to Pendrin
Specificity	Recognizes endogenous levels of Pendrin protein.
Antibody Type	Primary antibody
Immunogen	KLH-conjugated synthetic peptide encompassing a sequence within the Central region of human Pendrin. The exact sequence is proprietary.
Purification	The antibody was purified by immunogen affinity chromatography.
Molecular Weight	Predicted: 85 kD; Observed: 90 kD
Form/Buffer	Liquid in 0.42% Potassium phosphate, 0.87% Sodium chloride, pH 7.3, 30% glycerol, and 0.01% sodium azide.
Alternative Names	PDS; Pendrin; Sodium-independent chloride/iodide transporter; Solute carrier family 26 member 4
Gene Symbol	SLC26A4
Entrez Gene	5172(Human); 29440(Rat)
SwissProt	O43511(Human); Q9R154(Rat)

*AREX continuously optimizes our products. Webpage content may not reflect the latest updates. For inquiries, please contact info@arexbio.com or your local distributor.

*Clone Number, Reactivity, Source/Host and Clonality can be found in the product name and Key Features section above.

DATASHEET**Pendrin Rabbit Polyclonal Antibody**

CAT. NO. APA19181

DATA

Western blot analysis of Pendrin expression in human kidney (A), rat kidney (B) whole cell lysates. (Predicted band size: 85 kD; Observed band size: 90 kD)

STORAGE

Store at 4°C short term. For long term storage, store at -20°C, avoiding freeze/thaw cycles.

NOTE

For Research Use Only. Not for diagnostic, therapeutics, prophylactic or in vivo use.