

## DATASHEET

# PET1 Rabbit Polyclonal Antibody

CAT. NO. APA19184

### KEY FEATURES

|               |   |               |                     |
|---------------|---|---------------|---------------------|
| Target        | PET1  | Source / Host | Rabbit              |
| Reactivity    | Human   | Clonality     | Polyclonal          |
| Applications  | WB, IHC   | Conjugation   | Unconjugated        |
| Form / Buffer | Liquid in 0.42% Potassium phosphate, 0.87% Sodium chloride, pH 7.3, 30% glycerol, and 0.01% sodium azide. |               | Storage<br>at -20°C |

### BACKGROUND

Functions as a transcriptional regulator. According to PubMed:12761502, it functions as a transcriptional repressor. Functions in the differentiation and the maintenance of the central serotonergic neurons. May play a role in cell growth.

### APPLICATION

To ensure optimal assay performance, AREX recommends conducting reagent titration tailored to each testing system for optimal detection results.

|     |                |
|-----|----------------|
| WB  | 1:500 - 1:1000 |
| IHC | 1:50 - 1:200   |

\*Results are sample-specific. Please refer to your local assay conditions and test parameters for reference.

### PRODUCT OVERVIEW

|                   |   |
|-------------------|---|
| Description       | Rabbit polyclonal antibody to PET1  |
| Specificity       | Recognizes endogenous levels of PET1 protein.   |
| Antibody Type     | Primary antibody  |
| Immunogen         | KLH-conjugated synthetic peptide encompassing a sequence within the N-terminal region of human PET1. The exact sequence is proprietary. |
| Purification      | The antibody was purified by immunogen affinity chromatography.   |
| Molecular Weight  | Predicted: 25 kD; Observed: 25 kD   |
| Form/Buffer       | Liquid in 0.42% Potassium phosphate, 0.87% Sodium chloride, pH 7.3, 30% glycerol, and 0.01% sodium azide.                               |
| Alternative Names | PET1; Protein FEV; Fifth Ewing variant protein; PC12 ETS domain-containing transcription factor 1; PC12 ETS factor 1; Pet-1             |
| Gene Symbol       | FEV   |
| Entrez Gene       | 54738(Human)  |
| SwissProt         | Q99581(Human)   |

\*AREX continuously optimizes our products. Webpage content may not reflect the latest updates. For inquiries, please contact [info@arexbio.com](mailto:info@arexbio.com) or your local distributor.

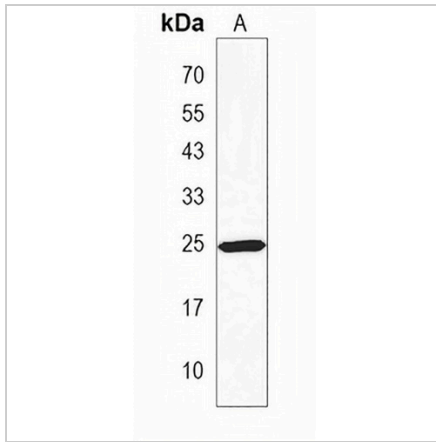
\*Clone Number, Reactivity, Source/Host and Clonality can be found in the product name and Key Features section above.

**DATASHEET**

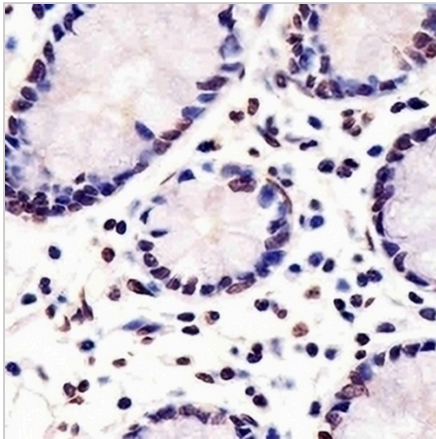
**PET1 Rabbit Polyclonal Antibody**

CAT. NO. APA19184

**DATA**



Western blot analysis of PET1 expression in K562 (A) whole cell lysates. (Predicted band size: 25 kD; Observed band size: 25 kD)



Immunohistochemical analysis of PET1 staining in human small intestine formalin fixed paraffin embedded tissue section. The section was pre-treated using heat mediated antigen retrieval with sodium citrate buffer (pH 6.0). The section was then incubated with the antibody at room temperature and detected using an HRP conjugated compact polymer system. DAB was used as the chromogen. The section was then counterstained with haematoxylin and mounted with DPX.

**STORAGE**

Store at 4°C short term. For long term storage, store at -20°C, avoiding freeze/thaw cycles.

**NOTE**

For Research Use Only. Not for diagnostic, therapeutics, prophylactic or in vivo use.