

DATASHEET

SPPL2B Rabbit Polyclonal Antibody

CAT. NO. APA19185

KEY FEATURES

Target	SPPL2B	Source / Host	Rabbit
Reactivity	Human	Clonality	Polyclonal
Applications	WB	Conjugation	Unconjugated
Form / Buffer	Liquid in 0.42% Potassium phosphate, 0.87% Sodium chloride, pH 7.3, 30% glycerol, and 0.01% sodium azide.		Storage at -20°C

BACKGROUND

Intramembrane-cleaving aspartic protease (I-CLiP) that cleaves type II membrane signal peptides in the hydrophobic plane of the membrane. Functions in ITM2B and TNF processing that cleaves type II membrane signal peptides in the hydrophobic plane of the membrane. Functions in ITM2B and TNF processing . Catalyzes the intramembrane cleavage of the anchored fragment of shed TNF (TNF), which promotes the release of the intracellular domain (ICD) for signaling to the nucleus . May play a role in the regulation of innate and adaptive immunity . Catalyzes the intramembrane cleavage of the simian foamy virus processed leader peptide gp18 of the envelope glycoprotein gp130 dependently of prior ectodomain shedding by furin or furin-like proprotein convertase (PC)-mediated cleavage proteolysis .

APPLICATION

To ensure optimal assay performance, AREX recommends conducting reagent titration tailored to each testing system for optimal detection results.

WB	1:500 - 1:1000
----	----------------

*Results are sample-specific. Please refer to your local assay conditions and test parameters for reference.

PRODUCT OVERVIEW

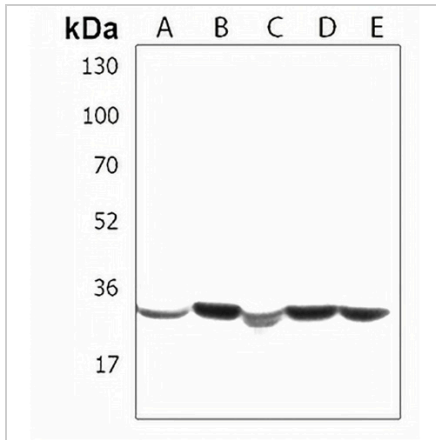
Description	Rabbit polyclonal antibody to SPPL2B
Specificity	Recognizes endogenous levels of SPPL2B protein.
Antibody Type	Primary antibody
Immunogen	KLH-conjugated synthetic peptide encompassing a sequence within the Central region of human SPPL2B. The exact sequence is proprietary.
Purification	The antibody was purified by immunogen affinity chromatography.
Molecular Weight	Predicted: 64 kD; Observed: 34 kD
Form/Buffer	Liquid in 0.42% Potassium phosphate, 0.87% Sodium chloride, pH 7.3, 30% glycerol, and 0.01% sodium azide.
Alternative Names	IMP4; KIAA1532; PSL1; Signal peptide peptidase-like 2B; SPP-like 2B; SPPL2b; Intramembrane protease 4; IMP-4; Presenilin homologous protein 4; PSH4; Presenilin-like protein 1
Gene Symbol	SPPL2B
Entrez Gene	56928(Human)
SwissProt	Q8TCT7(Human)

*AREX continuously optimizes our products. Webpage content may not reflect the latest updates. For inquiries, please contact info@arexbio.com or your local distributor.

*Clone Number, Reactivity, Source/Host and Clonality can be found in the product name and Key Features section above.

DATASHEET**SPPL2B Rabbit Polyclonal Antibody**

CAT. NO. APA19185

DATA

Western blot analysis of SPPL2B expression in HeLa (A), HT29 (B), Jurkat (C), KG1 (D), Ramos (E) whole cell lysates. (Predicted band size: 64 kD; Observed band size: 34 kD)

STORAGE

Store at 4°C short term. For long term storage, store at -20°C, avoiding freeze/thaw cycles.

NOTE

For Research Use Only. Not for diagnostic, therapeutics, prophylactic or in vivo use.