

DATASHEET

SRGAP3 Rabbit Polyclonal Antibody

CAT. NO. APA19186

KEY FEATURES

Target	SRGAP3	Source / Host	Rabbit
Reactivity	Human	Clonality	Polyclonal
Applications	WB	Conjugation	Unconjugated
Form / Buffer	Liquid in 0.42% Potassium phosphate, 0.87% Sodium chloride, pH 7.3, 30% glycerol, and 0.01% sodium azide.		Storage at -20°C

BACKGROUND

GTPase-activating protein for RAC1 and perhaps Cdc42, but not for RhoA small GTPase. May attenuate RAC1 signaling in neurons.

APPLICATION

To ensure optimal assay performance, AREX recommends conducting reagent titration tailored to each testing system for optimal detection results.

WB	1:500 - 1:1000
----	----------------

*Results are sample-specific. Please refer to your local assay conditions and test parameters for reference.

PRODUCT OVERVIEW

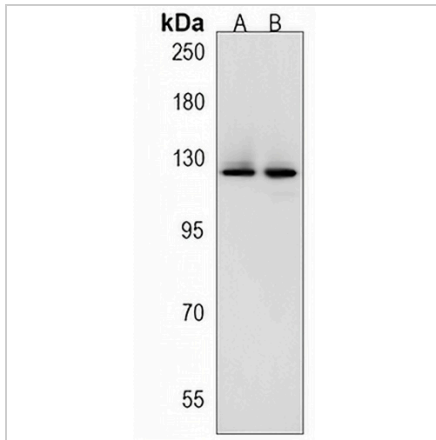
Description	Rabbit polyclonal antibody to SRGAP3
Specificity	Recognizes endogenous levels of SRGAP3 protein.
Antibody Type	Primary antibody
Immunogen	KLH-conjugated synthetic peptide encompassing a sequence within the C-terminal region of human SRGAP3. The exact sequence is proprietary.
Purification	The antibody was purified by immunogen affinity chromatography.
Molecular Weight	Predicted: 124 kD; Observed: 125 kD
Form/Buffer	Liquid in 0.42% Potassium phosphate, 0.87% Sodium chloride, pH 7.3, 30% glycerol, and 0.01% sodium azide.
Alternative Names	ARHGAP14; KIAA0411; KIAA1156; MEGAP; SRGAP2; SLIT-ROBO Rho GTPase-activating protein 3; srGAP3; Mental disorder-associated GAP; Rho GTPase-activating protein 14; WAVE-associated Rac GTPase-activating protein; WRP
Gene Symbol	SRGAP3
Entrez Gene	9901(Human)
SwissProt	O43295(Human)

*AREX continuously optimizes our products. Webpage content may not reflect the latest updates. For inquiries, please contact info@arexbio.com or your local distributor.

*Clone Number, Reactivity, Source/Host and Clonality can be found in the product name and Key Features section above.

DATASHEET**SRGAP3 Rabbit Polyclonal Antibody**

CAT. NO. APA19186

DATA

Western blot analysis of SRGAP3 expression in HeLa (A), Jurkat (B) whole cell lysates. (Predicted band size: 124 kD; Observed band size: 125 kD)

STORAGE

Store at 4°C short term. For long term storage, store at -20°C, avoiding freeze/thaw cycles.

NOTE

For Research Use Only. Not for diagnostic, therapeutics, prophylactic or in vivo use.