

DATASHEET

PM20D1 Rabbit Polyclonal Antibody

CAT. NO. APA19189

KEY FEATURES

Target	PM20D1	Source / Host	Rabbit
Reactivity	Human	Clonality	Polyclonal
Applications	WB	Conjugation	Unconjugated
Form / Buffer	Liquid in 0.42% Potassium phosphate, 0.87% Sodium chloride, pH 7.3, 30% glycerol, and 0.01% sodium azide.		Storage at -20°C

BACKGROUND

Secreted enzyme that regulates the endogenous N-fatty acyl amino acid (NAAs) tissue and circulating levels by functioning as a bidirectional NAA synthase/hydrolase tissue and circulating levels by functioning as a bidirectional NAA synthase/hydrolase . It condenses free fatty acids and free amino acids to generate NAAs and bidirectionally catalyzes the reverse hydrolysis reaction . Some of these NAAs stimulate oxidative metabolism via mitochondrial uncoupling, increasing energy expenditure in a UPC1-independent manner. Thereby, this secreted protein may indirectly regulate whole body energy expenditure. PM20D1 circulates in tight association with both low- and high-density (LDL and HDL, respectively) lipoprotein particles .

APPLICATION

To ensure optimal assay performance, AREX recommends conducting reagent titration tailored to each testing system for optimal detection results.

WB	1:500 - 1:1000
----	----------------

*Results are sample-specific. Please refer to your local assay conditions and test parameters for reference.

PRODUCT OVERVIEW

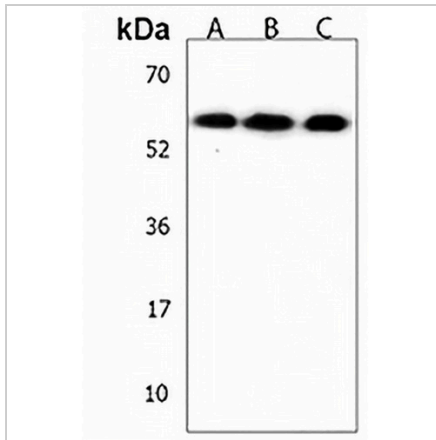
Description	Rabbit polyclonal antibody to PM20D1
Specificity	Recognizes endogenous levels of PM20D1 protein.
Antibody Type	Primary antibody
Immunogen	KLH-conjugated synthetic peptide encompassing a sequence within the Central region of human PM20D1. The exact sequence is proprietary.
Purification	The antibody was purified by immunogen affinity chromatography.
Molecular Weight	Predicted: 55 kD; Observed: 55 kD
Form/Buffer	Liquid in 0.42% Potassium phosphate, 0.87% Sodium chloride, pH 7.3, 30% glycerol, and 0.01% sodium azide.
Alternative Names	Probable carboxypeptidase PM20D1; Peptidase M20 domain-containing protein 1
Gene Symbol	PM20D1
Entrez Gene	148811(Human)
SwissProt	Q6GTS8(Human)

*AREX continuously optimizes our products. Webpage content may not reflect the latest updates. For inquiries, please contact info@arexbio.com or your local distributor.

*Clone Number, Reactivity, Source/Host and Clonality can be found in the product name and Key Features section above.

DATASHEET**PM20D1 Rabbit Polyclonal Antibody**

CAT. NO. APA19189

DATA

Western blot analysis of PM20D1 expression in A549 (A), human liver (B), ZR751 (C) whole cell lysates. (Predicted band size: 55 kD; Observed band size: 55 kD)

STORAGE

Store at 4°C short term. For long term storage, store at -20°C, avoiding freeze/thaw cycles.

NOTE

For Research Use Only. Not for diagnostic, therapeutics, prophylactic or in vivo use.