

**DATASHEET**

**Myosin 11 Rabbit Polyclonal Antibody**

CAT. NO. APA19194

**KEY FEATURES**

|               |   |               |                     |
|---------------|---|---------------|---------------------|
| Target        | Myosin 11   | Source / Host | Rabbit              |
| Reactivity    | Mouse   | Clonality     | Polyclonal          |
| Applications  | WB  | Conjugation   | Unconjugated        |
| Form / Buffer | Liquid in 0.42% Potassium phosphate, 0.87% Sodium chloride, pH 7.3, 30% glycerol, and 0.01% sodium azide. |               | Storage<br>at -20°C |

**BACKGROUND**

This gene encodes a tumor suppressor protein containing transcriptional activation, DNA binding, and oligomerization domains. The encoded protein responds to diverse cellular stresses to regulate expression of target genes, thereby inducing cell cycle arrest, apoptosis, senescence, DNA repair, or changes in metabolism. Mutations in this gene are associated with a variety of human cancers, including hereditary cancers such as Li-Fraumeni syndrome. Alternative splicing of this gene and the use of alternate promoters result in multiple transcript variants and isoforms. Additional isoforms have also been shown to result from the use of alternate translation initiation codons from identical transcript variants (PMIDs: 12032546, 20937277).

**APPLICATION**

To ensure optimal assay performance, AREX recommends conducting reagent titration tailored to each testing system for optimal detection results.

|    |                |
|----|----------------|
| WB | 1:500 - 1:1000 |
|----|----------------|

\*Results are sample-specific. Please refer to your local assay conditions and test parameters for reference.

**PRODUCT OVERVIEW**

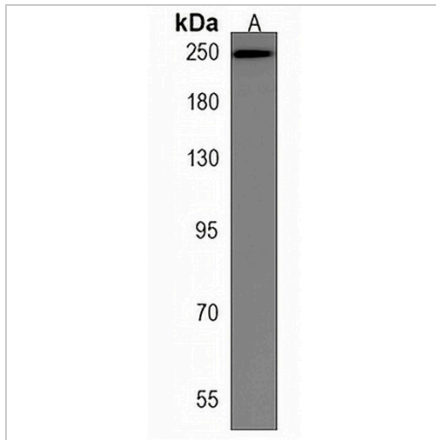
|                   |  |
|-------------------|--|
| Description       | Rabbit polyclonal antibody to Myosin 11  |
| Specificity       | Recognizes endogenous levels of Myosin 11 protein.   |
| Antibody Type     | Primary antibody   |
| Immunogen         | KLH-conjugated synthetic peptide encompassing a sequence within the N-terminal region of human Myosin 11. The exact sequence is proprietary. |
| Purification      | The antibody was purified by immunogen affinity chromatography.  |
| Molecular Weight  | Predicted: 227 kD; Observed: 250 kD  |
| Form/Buffer       | Liquid in 0.42% Potassium phosphate, 0.87% Sodium chloride, pH 7.3, 30% glycerol, and 0.01% sodium azide.                                    |
| Alternative Names | KIAA0866; Myosin-11; Myosin heavy chain 11; Myosin heavy chain, smooth muscle isoform; SMMHC   |
| Gene Symbol       | MYH11  |
| Entrez Gene       | 17880(Mouse)   |
| SwissProt         | O08638(Mouse)  |

\*AREX continuously optimizes our products. Webpage content may not reflect the latest updates. For inquiries, please contact [info@arexbio.com](mailto:info@arexbio.com) or your local distributor.

\*Clone Number, Reactivity, Source/Host and Clonality can be found in the product name and Key Features section above.

**DATASHEET****Myosin 11 Rabbit Polyclonal Antibody**

CAT. NO. APA19194

**DATA**

Western blot analysis of Myosin 11 expression in mouse colon (A) whole cell lysates.  
(Predicted band size: 227 kD; Observed band size: 250 kD)

**STORAGE**

Store at 4°C short term. For long term storage, store at -20°C, avoiding freeze/thaw cycles.

**NOTE**

For Research Use Only. Not for diagnostic, therapeutics, prophylactic or in vivo use.