

DATASHEET

PTGFR Rabbit Polyclonal Antibody

CAT. NO. APA19199

KEY FEATURES

Target	PTGFR	Source / Host	Rabbit
Reactivity	Human	Clonality	Polyclonal
Applications	WB	Conjugation	Unconjugated
Form / Buffer	Liquid in 0.42% Potassium phosphate, 0.87% Sodium chloride, pH 7.3, 30% glycerol, and 0.01% sodium azide.		Storage at -20°C

BACKGROUND

Receptor for prostaglandin F2-alpha (PGF2-alpha). The activity of this receptor is mediated by G proteins which activate a phosphatidylinositol-calcium second messenger system. Initiates luteolysis in the corpus luteum . Isoforms 2 to 7 do not bind PGF2-alpha but are proposed to modulate signaling by participating in variant receptor complexes; heterodimers between isoform 1 and isoform 5 are proposed to be a receptor for prostamides including the synthetic analog bimatoprost.

APPLICATION

To ensure optimal assay performance, AREX recommends conducting reagent titration tailored to each testing system for optimal detection results.

WB	1:500 - 1:1000
----	----------------

*Results are sample-specific. Please refer to your local assay conditions and test parameters for reference.

PRODUCT OVERVIEW

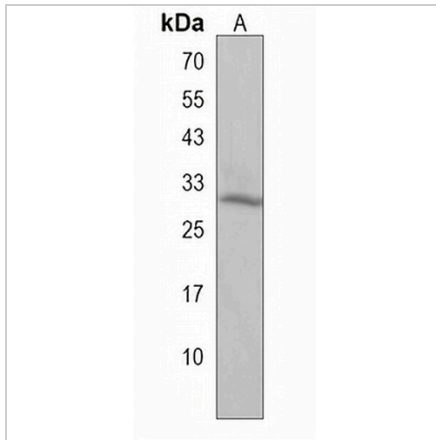
Description	Rabbit polyclonal antibody to PTGFR
Specificity	Recognizes endogenous levels of PTGFR protein.
Antibody Type	Primary antibody
Immunogen	KLH-conjugated synthetic peptide encompassing a sequence within the Central region of human PTGFR. The exact sequence is proprietary.
Purification	The antibody was purified by immunogen affinity chromatography.
Molecular Weight	Predicted: 40 kD; Observed: 30 kD
Form/Buffer	Liquid in 0.42% Potassium phosphate, 0.87% Sodium chloride, pH 7.3, 30% glycerol, and 0.01% sodium azide.
Alternative Names	Prostaglandin F2-alpha receptor; PGF receptor; PGF2-alpha receptor; Prostanoid FP receptor
Gene Symbol	PTGFR
Entrez Gene	5737(Human)
SwissProt	P43088(Human)

*AREX continuously optimizes our products. Webpage content may not reflect the latest updates. For inquiries, please contact info@arexbio.com or your local distributor.

*Clone Number, Reactivity, Source/Host and Clonality can be found in the product name and Key Features section above.

DATASHEET**PTGFR Rabbit Polyclonal Antibody**

CAT. NO. APA19199

DATA

Western blot analysis of PTGFR expression in HT1080 (A) whole cell lysates. (Predicted band size: 40 kD; Observed band size: 30 kD)

STORAGE

Store at 4°C short term. For long term storage, store at -20°C, avoiding freeze/thaw cycles.

NOTE

For Research Use Only. Not for diagnostic, therapeutics, prophylactic or in vivo use.