

DATASHEET

ZFP64 Rabbit Polyclonal Antibody

CAT. NO. APA19201

KEY FEATURES

Target	ZFP64	Source / Host	Rabbit
Reactivity	Human	Clonality	Polyclonal
Applications	WB	Conjugation	Unconjugated
Form / Buffer	Liquid in 0.42% Potassium phosphate, 0.87% Sodium chloride, pH 7.3, 30% glycerol, and 0.01% sodium azide.		Storage at -20°C

BACKGROUND

May be involved in the regulation of mesenchymal cell differentiation through transactivation of NOTCH1 target genes.

APPLICATION

To ensure optimal assay performance, AREX recommends conducting reagent titration tailored to each testing system for optimal detection results.

WB	1:500 - 1:1000
----	----------------

*Results are sample-specific. Please refer to your local assay conditions and test parameters for reference.

PRODUCT OVERVIEW

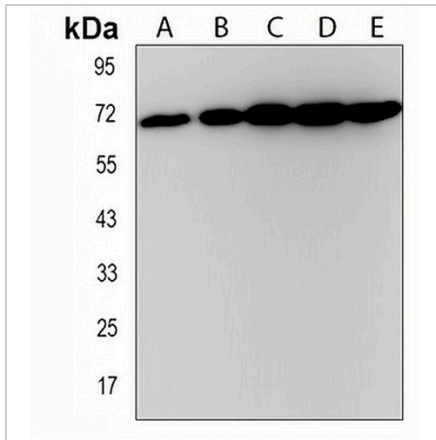
Description	Rabbit polyclonal antibody to ZFP64
Specificity	Recognizes endogenous levels of ZFP64 protein.
Antibody Type	Primary antibody
Immunogen	KLH-conjugated synthetic peptide encompassing a sequence within the Central region of human ZFP64. The exact sequence is proprietary.
Purification	The antibody was purified by immunogen affinity chromatography.
Molecular Weight	Predicted: 72 kD; Observed: 69 kD
Form/Buffer	Liquid in 0.42% Potassium phosphate, 0.87% Sodium chloride, pH 7.3, 30% glycerol, and 0.01% sodium azide.
Alternative Names	ZNF338; Zinc finger protein 64 homolog, isoforms 1 and 2; Zfp-64; Zinc finger protein 338
Gene Symbol	ZFP64
Entrez Gene	55734(Human)
SwissProt	Q9NPA5(Human)

*AREX continuously optimizes our products. Webpage content may not reflect the latest updates. For inquiries, please contact info@arexbio.com or your local distributor.

*Clone Number, Reactivity, Source/Host and Clonality can be found in the product name and Key Features section above.

DATASHEET**ZFP64 Rabbit Polyclonal Antibody**

CAT. NO. APA19201

DATA

Western blot analysis of ZFP64 expression in 293T (A), DU145 (B), HeLa (C), HepG2 (D), Jurkat (E) whole cell lysates. (Predicted band size: 72 kD; Observed band size: 69 kD)

STORAGE

Store at 4°C short term. For long term storage, store at -20°C, avoiding freeze/thaw cycles.

NOTE

For Research Use Only. Not for diagnostic, therapeutics, prophylactic or in vivo use.