

DATASHEET

FLYWCH1 Rabbit Polyclonal Antibody

CAT. NO. APA19206

KEY FEATURES

Target	FLYWCH1	Source / Host	Rabbit
Reactivity	Mouse	Clonality	Polyclonal
Applications	WB	Conjugation	Unconjugated
Form / Buffer	Liquid in 0.42% Potassium phosphate, 0.87% Sodium chloride, pH 7.3, 30% glycerol, and 0.01% sodium azide.		Storage at -20°C

BACKGROUND

Enables transcription coactivator binding activity and transcription corepressor activity. Involved in DNA damage response and negative regulation of transcription by RNA polymerase II. Located in cytosol; nuclear body; and pericentric heterochromatin. Part of transcription regulator complex.

APPLICATION

To ensure optimal assay performance, AREX recommends conducting reagent titration tailored to each testing system for optimal detection results.

WB	1:500 - 1:1000
----	----------------

*Results are sample-specific. Please refer to your local assay conditions and test parameters for reference.

PRODUCT OVERVIEW

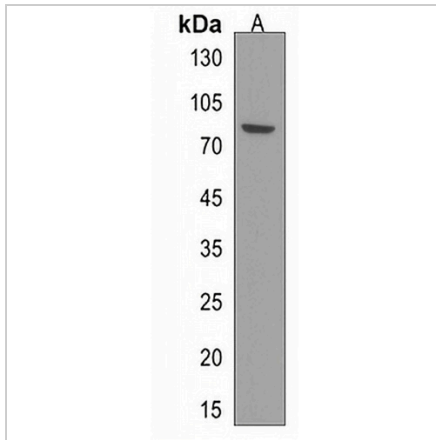
Description	Rabbit polyclonal antibody to FLYWCH1
Specificity	Recognizes endogenous levels of FLYWCH1 protein.
Antibody Type	Primary antibody
Immunogen	KLH-conjugated synthetic peptide encompassing a sequence within the Central region of human FLYWCH1. The exact sequence is proprietary.
Purification	The antibody was purified by immunogen affinity chromatography.
Molecular Weight	Predicted: 80 kD; Observed: 80 kD
Form/Buffer	Liquid in 0.42% Potassium phosphate, 0.87% Sodium chloride, pH 7.3, 30% glycerol, and 0.01% sodium azide.
Alternative Names	KIAA1552; FLYWCH-type zinc finger-containing protein 1
Gene Symbol	FLYWCH1
Entrez Gene	224613(Mouse)
SwissProt	Q8CI03(Mouse)

*AREX continuously optimizes our products. Webpage content may not reflect the latest updates. For inquiries, please contact info@arexbio.com or your local distributor.

*Clone Number, Reactivity, Source/Host and Clonality can be found in the product name and Key Features section above.

DATASHEET**FLYWCH1 Rabbit Polyclonal Antibody**

CAT. NO. APA19206

DATA

Western blot analysis of FLYWCH1 expression in mouse testis (A) whole cell lysates.
(Predicted band size: 80 kD; Observed band size: 80 kD)

STORAGE

Store at 4°C short term. For long term storage, store at -20°C, avoiding freeze/thaw cycles.

NOTE

For Research Use Only. Not for diagnostic, therapeutics, prophylactic or in vivo use.