

## DATASHEET

# ATP5EP2 Rabbit Polyclonal Antibody

CAT. NO. APA19211

### KEY FEATURES

|               |   |               |                     |
|---------------|---|---------------|---------------------|
| Target        | ATP5EP2   | Source / Host | Rabbit              |
| Reactivity    | Human   | Clonality     | Polyclonal          |
| Applications  | WB  | Conjugation   | Unconjugated        |
| Form / Buffer | Liquid in 0.42% Potassium phosphate, 0.87% Sodium chloride, pH 7.3, 30% glycerol, and 0.01% sodium azide. |               | Storage<br>at -20°C |

### BACKGROUND

Mitochondrial membrane ATP synthase (F(1)F(0) ATP synthase or Complex V) produces ATP from ADP in the presence of a proton gradient across the membrane which is generated by electron transport complexes of the respiratory chain. F-type ATPases consist of two structural domains, F(1) - containing the extramembraneous catalytic core, and F(0) - containing the membrane proton channel, linked together by a central stalk and a peripheral stalk. During catalysis, ATP synthesis in the catalytic domain of F(1) is coupled via a rotary mechanism of the central stalk subunits to proton translocation. Part of the complex F(1) domain and of the central stalk which is part of the complex rotary element.

### APPLICATION

To ensure optimal assay performance, AREX recommends conducting reagent titration tailored to each testing system for optimal detection results.

|    |                |
|----|----------------|
| WB | 1:500 - 1:1000 |
|----|----------------|

\*Results are sample-specific. Please refer to your local assay conditions and test parameters for reference.

### PRODUCT OVERVIEW

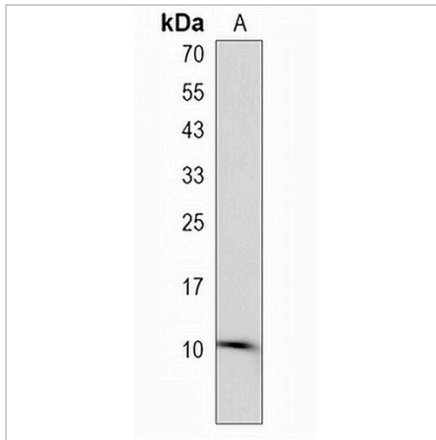
|                   |   |
|-------------------|---|
| Description       | Rabbit polyclonal antibody to ATP5EP2   |
| Specificity       | Recognizes endogenous levels of ATP5EP2 protein.  |
| Antibody Type     | Primary antibody  |
| Immunogen         | KLH-conjugated synthetic peptide encompassing a sequence within the Central region of human ATP5EP2. The exact sequence is proprietary. |
| Purification      | The antibody was purified by immunogen affinity chromatography.   |
| Molecular Weight  | Predicted: 5 kD; Observed: 11 kD  |
| Form/Buffer       | Liquid in 0.42% Potassium phosphate, 0.87% Sodium chloride, pH 7.3, 30% glycerol, and 0.01% sodium azide.                               |
| Alternative Names | ATP synthase subunit epsilon-like protein, mitochondrial  |
| Gene Symbol       | ATP5EP2   |
| Entrez Gene       | 432369(Human)   |
| SwissProt         | Q5VTU8(Human)   |

\*AREX continuously optimizes our products. Webpage content may not reflect the latest updates. For inquiries, please contact [info@arexbio.com](mailto:info@arexbio.com) or your local distributor.

\*Clone Number, Reactivity, Source/Host and Clonality can be found in the product name and Key Features section above.

**DATASHEET****ATP5EP2 Rabbit Polyclonal Antibody**

CAT. NO. APA19211

**DATA**

Western blot analysis of ATP5EP2 expression in human heart (A) whole cell lysates.  
(Predicted band size: 5 kD; Observed band size: 11 kD)

**STORAGE**

Store at 4°C short term. For long term storage, store at -20°C, avoiding freeze/thaw cycles.

**NOTE**

For Research Use Only. Not for diagnostic, therapeutics, prophylactic or in vivo use.