

DATASHEET

PRSS12 Rabbit Polyclonal Antibody

CAT. NO. APA19213

KEY FEATURES

| | | | |
|---------------|---|---------------|---------------------|
| Target | PRSS12 | Source / Host | Rabbit |
| Reactivity | Human | Clonality | Polyclonal |
| Applications | WB | Conjugation | Unconjugated |
| Form / Buffer | Liquid in 0.42% Potassium phosphate, 0.87% Sodium chloride, pH 7.3, 30% glycerol, and 0.01% sodium azide. | | Storage at -20°C |

BACKGROUND

Plays a role in neuronal plasticity and the proteolytic action may subserve structural reorganizations associated with learning and memory operations.

APPLICATION

To ensure optimal assay performance, AREX recommends conducting reagent titration tailored to each testing system for optimal detection results.

| | |
|----|----------------|
| WB | 1:500 - 1:1000 |
|----|----------------|

*Results are sample-specific. Please refer to your local assay conditions and test parameters for reference.

PRODUCT OVERVIEW

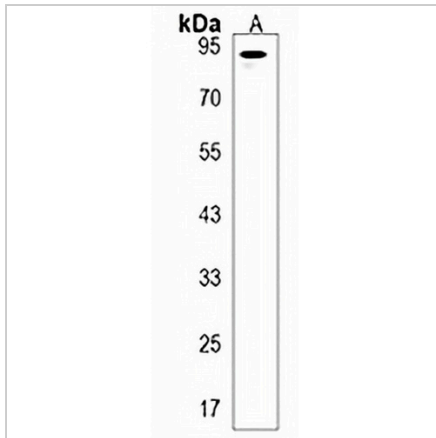
| | |
|-------------------|--|
| Description | Rabbit polyclonal antibody to PRSS12 |
| Specificity | Recognizes endogenous levels of PRSS12 protein. |
| Antibody Type | Primary antibody |
| Immunogen | KLH-conjugated synthetic peptide encompassing a sequence within the Central region of human PRSS12. The exact sequence is proprietary. |
| Purification | The antibody was purified by immunogen affinity chromatography. |
| Molecular Weight | Predicted: 97 kD; Observed: 95 kD |
| Form/Buffer | Liquid in 0.42% Potassium phosphate, 0.87% Sodium chloride, pH 7.3, 30% glycerol, and 0.01% sodium azide. |
| Alternative Names | Neurotrypsin; Leydin; Motopsin; Serine protease 12 |
| Gene Symbol | PRSS12 |
| Entrez Gene | 8492(Human) |
| SwissProt | P56730(Human) |

*AREX continuously optimizes our products. Webpage content may not reflect the latest updates. For inquiries, please contact info@arexbio.com or your local distributor.

*Clone Number, Reactivity, Source/Host and Clonality can be found in the product name and Key Features section above.

DATASHEET**PRSS12 Rabbit Polyclonal Antibody**

CAT. NO. APA19213

DATA

Western blot analysis of PRSS12 expression in human brain (A) whole cell lysates.
(Predicted band size: 97 kD; Observed band size: 95 kD)

STORAGE

Store at 4°C short term. For long term storage, store at -20°C, avoiding freeze/thaw cycles.

NOTE

For Research Use Only. Not for diagnostic, therapeutics, prophylactic or in vivo use.