

DATASHEET

FAM189B Rabbit Polyclonal Antibody

CAT. NO. APA19217

KEY FEATURES

Target	FAM189B	Source / Host	Rabbit
Reactivity	Human	Clonality	Polyclonal
Applications	WB	Conjugation	Unconjugated
Form / Buffer	Liquid in 0.42% Potassium phosphate, 0.87% Sodium chloride, pH 7.3, 30% glycerol, and 0.01% sodium azide.		Storage at -20°C

BACKGROUND

This gene is located near the gene for the lysosomal enzyme glucosylceramidase; a deficiency in this enzyme is associated with Gaucher disease. The encoded protein has been identified as a potential binding partner of a WW domain-containing protein which is involved in apoptosis and tumor suppression. Alternative splicing results in multiple transcript variants.

APPLICATION

To ensure optimal assay performance, AREX recommends conducting reagent titration tailored to each testing system for optimal detection results.

WB	1:500 - 1:1000
----	----------------

*Results are sample-specific. Please refer to your local assay conditions and test parameters for reference.

PRODUCT OVERVIEW

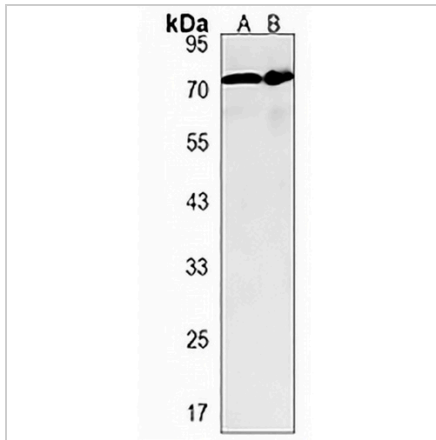
Description	Rabbit polyclonal antibody to FAM189B
Specificity	Recognizes endogenous levels of FAM189B protein.
Antibody Type	Primary antibody
Immunogen	KLH-conjugated synthetic peptide encompassing a sequence within the Central region of human FAM189B. The exact sequence is proprietary.
Purification	The antibody was purified by immunogen affinity chromatography.
Molecular Weight	Predicted: 71 kD; Observed: 71 kD
Form/Buffer	Liquid in 0.42% Potassium phosphate, 0.87% Sodium chloride, pH 7.3, 30% glycerol, and 0.01% sodium azide.
Alternative Names	C1orf2; COTE1; Protein FAM189B; Protein COTE1
Gene Symbol	FAM189B
Entrez Gene	10712(Human)
SwissProt	P81408(Human)

*AREX continuously optimizes our products. Webpage content may not reflect the latest updates. For inquiries, please contact info@arexbio.com or your local distributor.

*Clone Number, Reactivity, Source/Host and Clonality can be found in the product name and Key Features section above.

DATASHEET**FAM189B Rabbit Polyclonal Antibody**

CAT. NO. APA19217

DATA

Western blot analysis of FAM189B expression in human heart (A), Jurkat (B) whole cell lysates. (Predicted band size: 71 kD; Observed band size: 71 kD)

STORAGE

Store at 4°C short term. For long term storage, store at -20°C, avoiding freeze/thaw cycles.

NOTE

For Research Use Only. Not for diagnostic, therapeutics, prophylactic or in vivo use.