

DATASHEET

TMEM16K Rabbit Polyclonal Antibody

CAT. NO. APA19221

KEY FEATURES

Target	TMEM16K	Source / Host	Rabbit
Reactivity	Human, Mouse	Clonality	Polyclonal
Applications	WB	Conjugation	Unconjugated
Form / Buffer	Liquid in 0.42% Potassium phosphate, 0.87% Sodium chloride, pH 7.3, 30% glycerol, and 0.01% sodium azide.		Storage at -20°C

BACKGROUND

Does not exhibit calcium-activated chloride channel (CaCC) activity. Can inhibit the activity of ANO1.

APPLICATION

To ensure optimal assay performance, AREX recommends conducting reagent titration tailored to each testing system for optimal detection results.

WB	1:500 - 1:1000
----	----------------

*Results are sample-specific. Please refer to your local assay conditions and test parameters for reference.

PRODUCT OVERVIEW

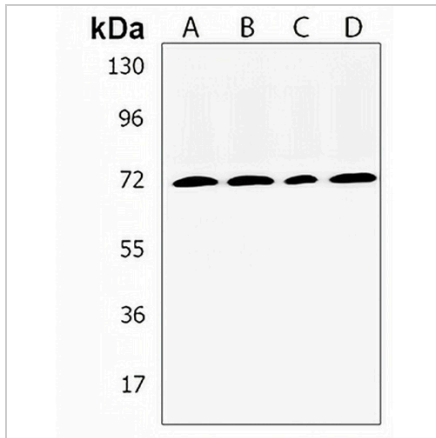
Description	Rabbit polyclonal antibody to TMEM16K
Specificity	Recognizes endogenous levels of TMEM16K protein.
Antibody Type	Primary antibody
Immunogen	KLH-conjugated synthetic peptide encompassing a sequence within the C-terminal region of human TMEM16K. The exact sequence is proprietary.
Purification	The antibody was purified by immunogen affinity chromatography.
Molecular Weight	Predicted: 76 kD; Observed: 69 kD
Form/Buffer	Liquid in 0.42% Potassium phosphate, 0.87% Sodium chloride, pH 7.3, 30% glycerol, and 0.01% sodium azide.
Alternative Names	TMEM16K; Anoctamin-10; Transmembrane protein 16K
Gene Symbol	ANO10
Entrez Gene	55129(Human); 102566(Mouse)
SwissProt	Q9NW15(Human); Q8BH79(Mouse)

*AREX continuously optimizes our products. Webpage content may not reflect the latest updates. For inquiries, please contact info@arexbio.com or your local distributor.

*Clone Number, Reactivity, Source/Host and Clonality can be found in the product name and Key Features section above.

DATASHEET**TMEM16K Rabbit Polyclonal Antibody**

CAT. NO. APA19221

DATA

Western blot analysis of TMEM16K expression in Y79 (A), 293T (B), human heart (C), mouse brain (D) whole cell lysates. (Predicted band size: 76 kD; Observed band size: 69 kD)

STORAGE

Store at 4°C short term. For long term storage, store at -20°C, avoiding freeze/thaw cycles.

NOTE

For Research Use Only. Not for diagnostic, therapeutics, prophylactic or in vivo use.