

**DATASHEET**

**ZBTB7C Rabbit Polyclonal Antibody**

CAT. NO. APA19223

**KEY FEATURES**

Target	ZBTB7C	Source / Host	Rabbit
Reactivity	Human	Clonality	Polyclonal
Applications	WB	Conjugation	Unconjugated
Form / Buffer	Liquid in 0.42% Potassium phosphate, 0.87% Sodium chloride, pH 7.3, 30% glycerol, and 0.01% sodium azide.		Storage at-20°C

**BACKGROUND**

May be a tumor suppressor gene.

**APPLICATION**

To ensure optimal assay performance, AREX recommends conducting reagent titration tailored to each testing system for optimal detection results.

WB	1:500 - 1:1000
----	----------------

\*Results are sample-specific. Please refer to your local assay conditions and test parameters for reference.

**PRODUCT OVERVIEW**

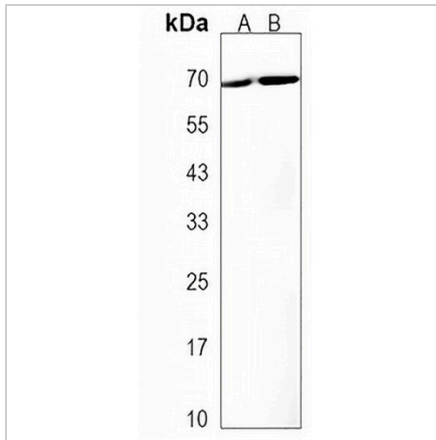
Description	Rabbit polyclonal antibody to ZBTB7C
Specificity	Recognizes endogenous levels of ZBTB7C protein.
Antibody Type	Primary antibody
Immunogen	KLH-conjugated synthetic peptide encompassing a sequence within the Central region of human ZBTB7C. The exact sequence is proprietary.
Purification	The antibody was purified by immunogen affinity chromatography.
Molecular Weight	Predicted: 69 kD; Observed: 69 kD
Form/Buffer	Liquid in 0.42% Potassium phosphate, 0.87% Sodium chloride, pH 7.3, 30% glycerol, and 0.01% sodium azide.
Alternative Names	APM1; ZBTB36; ZNF857C; Zinc finger and BTB domain-containing protein 7C; Affected by papillomavirus DNA integration in ME180 cells protein 1; APM-1; Zinc finger and BTB domain-containing protein 36; Zinc finger protein 857C
Gene Symbol	ZBTB7C
Entrez Gene	201501(Human)
SwissProt	A1YPR0(Human)

\*AREX continuously optimizes our products. Webpage content may not reflect the latest updates. For inquiries, please contact [info@arexbio.com](mailto:info@arexbio.com) or your local distributor.

\*Clone Number, Reactivity, Source/Host and Clonality can be found in the product name and Key Features section above.

**DATASHEET****ZBTB7C Rabbit Polyclonal Antibody**

CAT. NO. APA19223

**DATA**

Western blot analysis of ZBTB7C expression in human placenta (A), human uterus (B) whole cell lysates. (Predicted band size: 69 kD; Observed band size: 69 kD)

**STORAGE**

Store at 4°C short term. For long term storage, store at -20°C, avoiding freeze/thaw cycles.

**NOTE**

For Research Use Only. Not for diagnostic, therapeutics, prophylactic or in vivo use.