

**DATASHEET**

**PIGU Rabbit Polyclonal Antibody**

CAT. NO. APA19224

**KEY FEATURES**

Target	PIGU	Source / Host	Rabbit
Reactivity	Human, Mouse, Rat	Clonality	Polyclonal
Applications	WB	Conjugation	Unconjugated
Form / Buffer	Liquid in 0.42% Potassium phosphate, 0.87% Sodium chloride, pH 7.3, 30% glycerol, and 0.01% sodium azide.		Storage at -20°C

**BACKGROUND**

Component of the glycosylphosphatidylinositol-anchor (GPI-anchor) transamidase (GPI-T) complex that catalyzes the formation of the linkage between a proprotein and a GPI-anchor and participates in GPI anchored protein biosynthesis transamidase (GPI-T) complex that catalyzes the formation of the linkage between a proprotein and a GPI-anchor and participates in GPI anchored protein biosynthesis . Binds the lipid portion of GPI-anchor . May act as an organizer in the transmembrane layer to recruit other subunits, and thus is essential for assembly of the complex .

**APPLICATION**

To ensure optimal assay performance, AREX recommends conducting reagent titration tailored to each testing system for optimal detection results.

WB	1:500 - 1:1000
----	----------------

\*Results are sample-specific. Please refer to your local assay conditions and test parameters for reference.

**PRODUCT OVERVIEW**

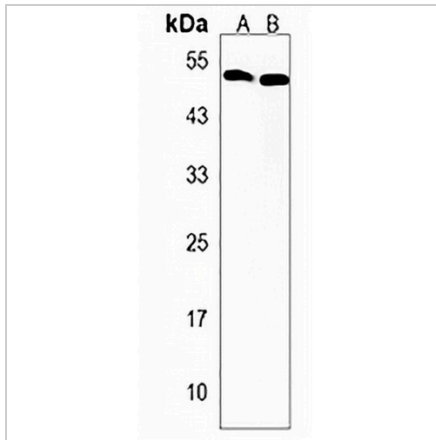
Description	Rabbit polyclonal antibody to PIGU
Specificity	Recognizes endogenous levels of PIGU protein.
Antibody Type	Primary antibody
Immunogen	KLH-conjugated synthetic peptide encompassing a sequence within the Central region of human PIGU. The exact sequence is proprietary.
Purification	The antibody was purified by immunogen affinity chromatography.
Molecular Weight	Predicted: 50 kD; Observed: 50 kD
Form/Buffer	Liquid in 0.42% Potassium phosphate, 0.87% Sodium chloride, pH 7.3, 30% glycerol, and 0.01% sodium azide.
Alternative Names	CDC91L1; Phosphatidylinositol glycan anchor biosynthesis class U protein; Cell division cycle protein 91-like 1; Protein CDC91-like 1; GPI transamidase component PIG-U
Gene Symbol	PIGU
Entrez Gene	128869(Human); 228812(Mouse); 353304(Rat)
SwissProt	Q9H490(Human); Q8K358(Mouse); Q8CHJ1(Rat)

\*AREX continuously optimizes our products. Webpage content may not reflect the latest updates. For inquiries, please contact [info@arexbio.com](mailto:info@arexbio.com) or your local distributor.

\*Clone Number, Reactivity, Source/Host and Clonality can be found in the product name and Key Features section above.

**DATASHEET****PIGU Rabbit Polyclonal Antibody**

CAT. NO. APA19224

**DATA**

Western blot analysis of PIGU expression in mouse heart (A), mouse kidney (B) whole cell lysates. (Predicted band size: 50 kD; Observed band size: 50 kD)

**STORAGE**

Store at 4°C short term. For long term storage, store at -20°C, avoiding freeze/thaw cycles.

**NOTE**

For Research Use Only. Not for diagnostic, therapeutics, prophylactic or in vivo use.