

DATASHEET

GNAS Rabbit Polyclonal Antibody

CAT. NO. APA19226

KEY FEATURES

Target	GNAS	Source / Host	Rabbit
Reactivity	Human, Mouse, Rat	Clonality	Polyclonal
Applications	WB	Conjugation	Unconjugated
Form / Buffer	Liquid in 0.42% Potassium phosphate, 0.87% Sodium chloride, pH 7.3, 30% glycerol, and 0.01% sodium azide.		Storage at -20°C

BACKGROUND

Guanine nucleotide-binding proteins (G proteins) function as transducers in numerous signaling pathways controlled by G protein-coupled receptors (GPCRs) function as transducers in numerous signaling pathways controlled by G protein-coupled receptors (GPCRs) . The alpha chain contains the guanine nucleotide binding site and alternates between an active, GTP-bound state and an inactive, GDP-bound state . Signaling by an activated GPCR promotes GDP release and GTP binding . The alpha subunit has a low GTPase activity that converts bound GTP to GDP, thereby terminating the signal . Both GDP release and GTP hydrolysis are modulated by numerous regulatory proteins . Signaling involves the activation of adenylyl cyclases, resulting in increased levels of the signaling molecule cAMP .

APPLICATION

To ensure optimal assay performance, AREX recommends conducting reagent titration tailored to each testing system for optimal detection results.

WB	1:1000 - 1:2000
----	-----------------

*Results are sample-specific. Please refer to your local assay conditions and test parameters for reference.

PRODUCT OVERVIEW

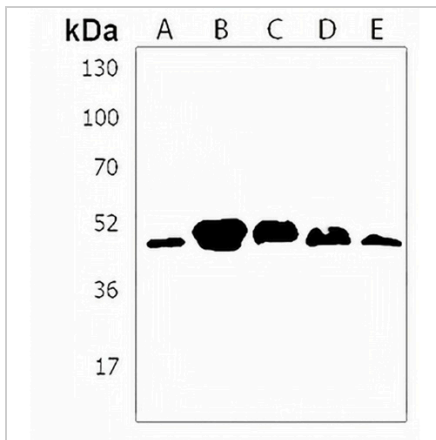
Description	Rabbit polyclonal antibody to GNAS
Specificity	Recognizes endogenous levels of GNAS protein.
Antibody Type	Primary antibody
Immunogen	KLH-conjugated synthetic peptide encompassing a sequence within the Central region of human GNAS. The exact sequence is proprietary.
Purification	The antibody was purified by immunogen affinity chromatography.
Molecular Weight	Predicted: 45 kD; Observed: 50 kD
Form/Buffer	Liquid in 0.42% Potassium phosphate, 0.87% Sodium chloride, pH 7.3, 30% glycerol, and 0.01% sodium azide.
Alternative Names	GNAS1; GSP; Guanine nucleotide-binding protein G(s) subunit alpha isoforms short; Adenylate cyclase-stimulating G alpha protein
Gene Symbol	GNAS
Entrez Gene	2778(Human); 14683(Mouse); 24896(Rat)
SwissProt	P63092(Human); P63094(Mouse); P63095(Rat)

*AREX continuously optimizes our products. Webpage content may not reflect the latest updates. For inquiries, please contact info@arexbio.com or your local distributor.

*Clone Number, Reactivity, Source/Host and Clonality can be found in the product name and Key Features section above.

DATASHEET**GNAS Rabbit Polyclonal Antibody**

CAT. NO. APA19226

DATA

Western blot analysis of GNAS expression in HepG2 (A), Raji (B), mouse brain (C), rat brain (D), human cerebellum (E) whole cell lysates. (Predicted band size: 45 kD; Observed band size: 50 kD)

STORAGE

Store at 4°C short term. For long term storage, store at -20°C, avoiding freeze/thaw cycles.

NOTE

For Research Use Only. Not for diagnostic, therapeutics, prophylactic or in vivo use.