

DATASHEET

DVL1P1 Rabbit Polyclonal Antibody

CAT. NO. APA19228

KEY FEATURES

Target	DVL1P1	Source / Host	Rabbit
Reactivity	Human	Clonality	Polyclonal
Applications	WB	Conjugation	Unconjugated
Form / Buffer	Liquid in 0.42% Potassium phosphate, 0.87% Sodium chloride, pH 7.3, 30% glycerol, and 0.01% sodium azide.		Storage at -20°C

BACKGROUND

May play a role in the signal transduction pathway mediated by multiple Wnt genes.

APPLICATION

To ensure optimal assay performance, AREX recommends conducting reagent titration tailored to each testing system for optimal detection results.

WB	1:500 - 1:1000
----	----------------

*Results are sample-specific. Please refer to your local assay conditions and test parameters for reference.

PRODUCT OVERVIEW

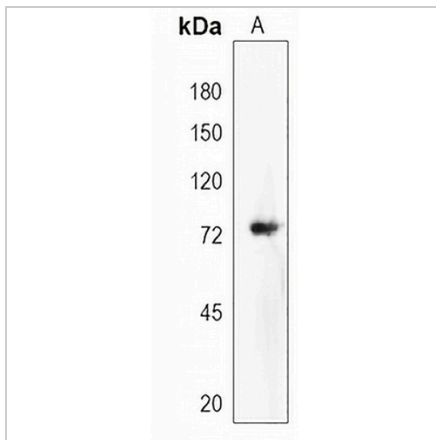
Description	Rabbit polyclonal antibody to DVL1P1
Specificity	Recognizes endogenous levels of DVL1P1 protein.
Antibody Type	Primary antibody
Immunogen	KLH-conjugated synthetic peptide encompassing a sequence within the N-terminal region of human DVL1P1. The exact sequence is proprietary.
Purification	The antibody was purified by immunogen affinity chromatography.
Molecular Weight	Predicted: 73 kD; Observed: 73 kD
Form/Buffer	Liquid in 0.42% Potassium phosphate, 0.87% Sodium chloride, pH 7.3, 30% glycerol, and 0.01% sodium azide.
Alternative Names	DVL; DVL1; DVL1L1; Putative segment polarity protein dishevelled homolog DVL1P1; DSH homolog 1-like; Segment polarity protein dishevelled homolog DVL-1-like; Dishevelled-1-like
Gene Symbol	DVL1P1
Entrez Gene	8215(Human)
SwissProt	P54792(Human)

*AREX continuously optimizes our products. Webpage content may not reflect the latest updates. For inquiries, please contact info@arexbio.com or your local distributor.

*Clone Number, Reactivity, Source/Host and Clonality can be found in the product name and Key Features section above.

DATASHEET**DVL1P1 Rabbit Polyclonal Antibody**

CAT. NO. APA19228

DATA

Western blot analysis of DVL1P1 expression in human heart (A) whole cell lysates.
(Predicted band size: 73 kD; Observed band size: 73 kD)

STORAGE

Store at 4°C short term. For long term storage, store at -20°C, avoiding freeze/thaw cycles.

NOTE

For Research Use Only. Not for diagnostic, therapeutics, prophylactic or in vivo use.