

DATASHEET

NUGGC Rabbit Polyclonal Antibody

CAT. NO. APA19234

KEY FEATURES

Target	NUGGC	Source / Host	Rabbit
Reactivity	Human	Clonality	Polyclonal
Applications	WB	Conjugation	Unconjugated
Form / Buffer	Liquid in 0.42% Potassium phosphate, 0.87% Sodium chloride, pH 7.3, 30% glycerol, and 0.01% sodium azide.		Storage at -20°C

BACKGROUND

Nuclear GTPase found in germinal center B-cells, where it may inhibit function of the activation-induced cytidine deaminase AICDA . Reduces somatic hypermutation in B-cells which may enhance genome stability .

APPLICATION

To ensure optimal assay performance, AREX recommends conducting reagent titration tailored to each testing system for optimal detection results.

WB	1:500 - 1:1000
----	----------------

*Results are sample-specific. Please refer to your local assay conditions and test parameters for reference.

PRODUCT OVERVIEW

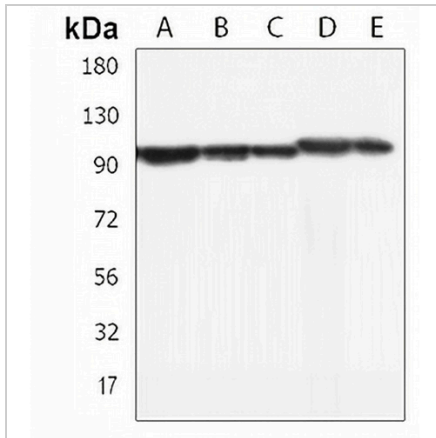
Description	Rabbit polyclonal antibody to NUGGC
Specificity	Recognizes endogenous levels of NUGGC protein.
Antibody Type	Primary antibody
Immunogen	KLH-conjugated synthetic peptide encompassing a sequence within the Central region of human NUGGC. The exact sequence is proprietary.
Purification	The antibody was purified by immunogen affinity chromatography.
Molecular Weight	Predicted: 91 kD; Observed: 95 kD
Form/Buffer	Liquid in 0.42% Potassium phosphate, 0.87% Sodium chloride, pH 7.3, 30% glycerol, and 0.01% sodium azide.
Alternative Names	C8orf80; Nuclear GTPase SLIP-GC; Speckled-like pattern in the germinal center
Gene Symbol	NUGGC
Entrez Gene	389643(Human)
SwissProt	Q68CJ6(Human)

*AREX continuously optimizes our products. Webpage content may not reflect the latest updates. For inquiries, please contact info@arexbio.com or your local distributor.

*Clone Number, Reactivity, Source/Host and Clonality can be found in the product name and Key Features section above.

DATASHEET**NUGGC Rabbit Polyclonal Antibody**

CAT. NO. APA19234

DATA

Western blot analysis of NUGGC expression in HeLa (A), HepG2 (B), PANC1 (C), Raji (D), Ramos (E) whole cell lysates. (Predicted band size: 91 kD; Observed band size: 95 kD)

STORAGE

Store at 4°C short term. For long term storage, store at -20°C, avoiding freeze/thaw cycles.

NOTE

For Research Use Only. Not for diagnostic, therapeutics, prophylactic or in vivo use.