

DATASHEET

p240 Rabbit Polyclonal Antibody

CAT. NO. APA19236

KEY FEATURES

Target	p240	Source / Host	Rabbit
Reactivity	Human, Mouse	Clonality	Polyclonal
Applications	WB	Conjugation	Unconjugated
Form / Buffer	Liquid in 0.42% Potassium phosphate, 0.87% Sodium chloride, pH 7.3, 30% glycerol, and 0.01% sodium azide.		Storage at -20°C

BACKGROUND

Catalytic subunit of the heterodimeric RalGAP1 complex which acts as a GTPase activator for the Ras-like small GTPases RALA and RALB.

APPLICATION

To ensure optimal assay performance, AREX recommends conducting reagent titration tailored to each testing system for optimal detection results.

WB	1:500 - 1:1000
----	----------------

*Results are sample-specific. Please refer to your local assay conditions and test parameters for reference.

PRODUCT OVERVIEW

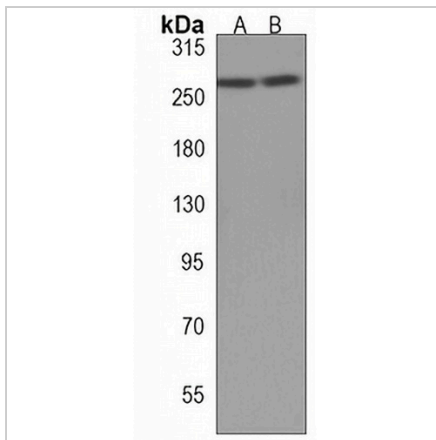
Description	Rabbit polyclonal antibody to p240
Specificity	Recognizes endogenous levels of p240 protein.
Antibody Type	Primary antibody
Immunogen	KLH-conjugated synthetic peptide encompassing a sequence within the Central region of human p240. The exact sequence is proprietary.
Purification	The antibody was purified by immunogen affinity chromatography.
Molecular Weight	Predicted: 229 kD; Observed: 260 kD
Form/Buffer	Liquid in 0.42% Potassium phosphate, 0.87% Sodium chloride, pH 7.3, 30% glycerol, and 0.01% sodium azide.
Alternative Names	GARNL1; KIAA0884; TULIP1; Ral GTPase-activating protein subunit alpha-1; GAP-related-interacting partner to E12; GRIPE; GTPase-activating Rap/Ran-GAP domain-like 1; Tuberin-like protein 1; p240
Gene Symbol	RALGAPA1
Entrez Gene	253959(Human); 56784(Mouse)
SwissProt	Q6GYQ0(Human); Q6GYP7(Mouse)

*AREX continuously optimizes our products. Webpage content may not reflect the latest updates. For inquiries, please contact info@arexbio.com or your local distributor.

*Clone Number, Reactivity, Source/Host and Clonality can be found in the product name and Key Features section above.

DATASHEET**p240 Rabbit Polyclonal Antibody**

CAT. NO. APA19236

DATA

Western blot analysis of p240 expression in HepG2 (A), mouse brain (B) whole cell lysates. (Predicted band size: 229 kD; Observed band size: 260 kD)

STORAGE

Store at 4°C short term. For long term storage, store at -20°C, avoiding freeze/thaw cycles.

NOTE

For Research Use Only. Not for diagnostic, therapeutics, prophylactic or in vivo use.