

## DATASHEET

# RNF139 Rabbit Polyclonal Antibody

CAT. NO. APA19238

### KEY FEATURES

Target	RNF139	Source / Host	Rabbit
Reactivity	Human	Clonality	Polyclonal
Applications	WB	Conjugation	Unconjugated
Form / Buffer	Liquid in 0.42% Potassium phosphate, 0.87% Sodium chloride, pH 7.3, 30% glycerol, and 0.01% sodium azide.		Storage at -20°C

### BACKGROUND

E3-ubiquitin ligase; acts as a negative regulator of cell proliferation through mechanisms involving G2/M arrest and cell death . Required for MHC class I ubiquitination in cells expressing the cytomegalovirus protein US2 before dislocation from the endoplasmic reticulum (ER) . Affects SREBP processing by hindering the SREBP-SCAP complex translocation from the ER to the Golgi, thereby reducing SREBF2 target gene expression . Involved in the sterol-accelerated degradation of HMGCR . This is achieved through binding of RNF139 to INSIG1 and/or INSIG2 at the ER membrane . In addition, interaction of RNF139 with AUP1 facilitates interaction of RNF139 with ubiquitin-conjugating enzyme UBE2G2 and ubiquitin ligase AMFR, leading to ubiquitination of HMGCR .

### APPLICATION

To ensure optimal assay performance, AREX recommends conducting reagent titration tailored to each testing system for optimal detection results.

WB	1:500 - 1:1000
----	----------------

\*Results are sample-specific. Please refer to your local assay conditions and test parameters for reference.

### PRODUCT OVERVIEW

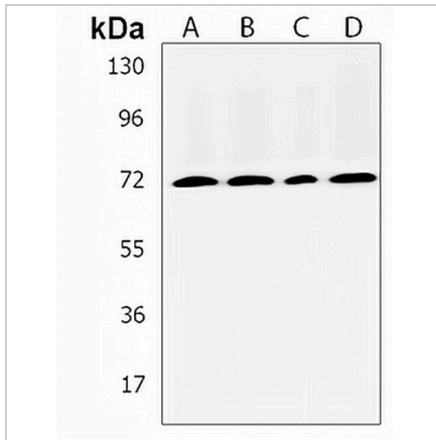
Description	Rabbit polyclonal antibody to RNF139
Specificity	Recognizes endogenous levels of RNF139 protein.
Antibody Type	Primary antibody
Immunogen	KLH-conjugated synthetic peptide encompassing a sequence within the C-terminal region of human RNF139. The exact sequence is proprietary.
Purification	The antibody was purified by immunogen affinity chromatography.
Molecular Weight	Predicted: 75 kD; Observed: 75 kD
Form/Buffer	Liquid in 0.42% Potassium phosphate, 0.87% Sodium chloride, pH 7.3, 30% glycerol, and 0.01% sodium azide.
Alternative Names	TRC8; E3 ubiquitin-protein ligase RNF139; RING finger protein 139; Translocation in renal carcinoma on chromosome 8 protein
Gene Symbol	RNF139
Entrez Gene	11236(Human)
SwissProt	Q8WU17(Human)

\*AREX continuously optimizes our products. Webpage content may not reflect the latest updates. For inquiries, please contact [info@arexbio.com](mailto:info@arexbio.com) or your local distributor.

\*Clone Number, Reactivity, Source/Host and Clonality can be found in the product name and Key Features section above.

**DATASHEET****RNF139 Rabbit Polyclonal Antibody**

CAT. NO. APA19238

**DATA**

Western blot analysis of RNF139 expression in Caki1 (A), human brain (B), human heart (C), human kidney (D) whole cell lysates. (Predicted band size: 75 kD; Observed band size: 75 kD)

**STORAGE**

Store at 4°C short term. For long term storage, store at -20°C, avoiding freeze/thaw cycles.

**NOTE**

For Research Use Only. Not for diagnostic, therapeutics, prophylactic or in vivo use.