

DATASHEET

ACBD4 Rabbit Polyclonal Antibody

CAT. NO. APA19246

KEY FEATURES

Target	ACBD4	Source / Host	Rabbit
Reactivity	Human, Rat	Clonality	Polyclonal
Applications	WB	Conjugation	Unconjugated
Form / Buffer	Liquid in 0.42% Potassium phosphate, 0.87% Sodium chloride, pH 7.3, 30% glycerol, and 0.01% sodium azide.		Storage at -20°C

BACKGROUND

Binds medium- and long-chain acyl-CoA esters and may function as an intracellular carrier of acyl-CoA esters.

APPLICATION

To ensure optimal assay performance, AREX recommends conducting reagent titration tailored to each testing system for optimal detection results.

WB	1:500 - 1:1000
----	----------------

*Results are sample-specific. Please refer to your local assay conditions and test parameters for reference.

PRODUCT OVERVIEW

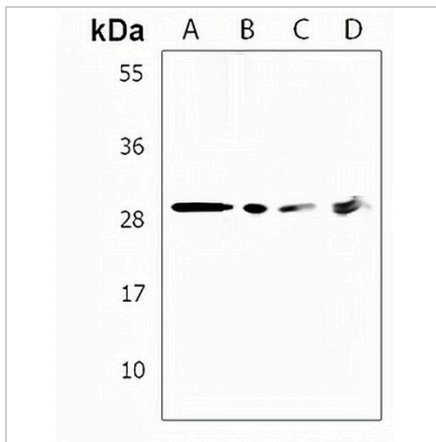
Description	Rabbit polyclonal antibody to ACBD4
Specificity	Recognizes endogenous levels of ACBD4 protein.
Antibody Type	Primary antibody
Immunogen	KLH-conjugated synthetic peptide encompassing a sequence within the Central region of human ACBD4. The exact sequence is proprietary.
Purification	The antibody was purified by immunogen affinity chromatography.
Molecular Weight	Predicted: 30 kD; Observed: 30 kD
Form/Buffer	Liquid in 0.42% Potassium phosphate, 0.87% Sodium chloride, pH 7.3, 30% glycerol, and 0.01% sodium azide.
Alternative Names	Acyl-CoA-binding domain-containing protein 4
Gene Symbol	ACBD4
Entrez Gene	79777(Human); 303577(Rat)
SwissProt	Q8NC06(Human); Q6DGF9(Rat)

*AREX continuously optimizes our products. Webpage content may not reflect the latest updates. For inquiries, please contact info@arexbio.com or your local distributor.

*Clone Number, Reactivity, Source/Host and Clonality can be found in the product name and Key Features section above.

DATASHEET**ACBD4 Rabbit Polyclonal Antibody**

CAT. NO. APA19246

DATA

Western blot analysis of ACBD4 expression in A549 (A), MCF7 (B), rat brain (C), T47D (D) whole cell lysates. (Predicted band size: 30 kD; Observed band size: 30 kD)

STORAGE

Store at 4°C short term. For long term storage, store at -20°C, avoiding freeze/thaw cycles.

NOTE

For Research Use Only. Not for diagnostic, therapeutics, prophylactic or in vivo use.