

DATASHEET

TMED4 Rabbit Polyclonal Antibody

CAT. NO. APA19249

KEY FEATURES

Target	TMED4	Source / Host	Rabbit
Reactivity	Human	Clonality	Polyclonal
Applications	WB	Conjugation	Unconjugated
Form / Buffer	Liquid in 0.42% Potassium phosphate, 0.87% Sodium chloride, pH 7.3, 30% glycerol, and 0.01% sodium azide.		Storage at -20°C

BACKGROUND

Involved in vesicular protein trafficking, mainly in the early secretory pathway. Targeting. Involved in the maintenance of the Golgi apparatus. Appears to play a role in the biosynthesis of secreted cargo including processing. Involved in endoplasmic reticulum stress response. May play a role in the regulation of heat-shock response and apoptosis.

APPLICATION

To ensure optimal assay performance, AREX recommends conducting reagent titration tailored to each testing system for optimal detection results.

WB	1:500 - 1:1000
----	----------------

*Results are sample-specific. Please refer to your local assay conditions and test parameters for reference.

PRODUCT OVERVIEW

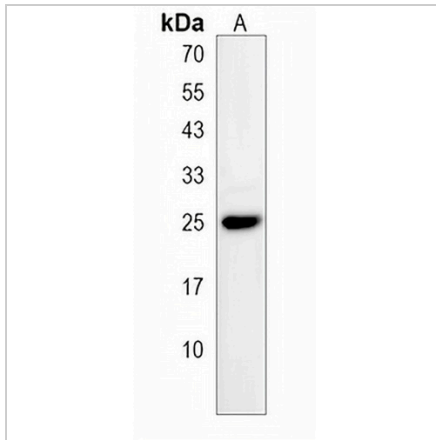
Description	Rabbit polyclonal antibody to TMED4
Specificity	Recognizes endogenous levels of TMED4 protein.
Antibody Type	Primary antibody
Immunogen	KLH-conjugated synthetic peptide encompassing a sequence within the Central region of human TMED4. The exact sequence is proprietary.
Purification	The antibody was purified by immunogen affinity chromatography.
Molecular Weight	Predicted: 25 kD; Observed: 26 kD
Form/Buffer	Liquid in 0.42% Potassium phosphate, 0.87% Sodium chloride, pH 7.3, 30% glycerol, and 0.01% sodium azide.
Alternative Names	ERS25; Transmembrane emp24 domain-containing protein 4; Endoplasmic reticulum stress-response protein 25; ERS25; GMP25iso; Putative NF-kappa-B-activating protein 156; p24 family protein alpha-3; p24alpha3
Gene Symbol	TMED4
Entrez Gene	222068(Human)
SwissProt	Q7Z7H5(Human)

*AREX continuously optimizes our products. Webpage content may not reflect the latest updates. For inquiries, please contact info@arexbio.com or your local distributor.

*Clone Number, Reactivity, Source/Host and Clonality can be found in the product name and Key Features section above.

DATASHEET**TMED4 Rabbit Polyclonal Antibody**

CAT. NO. APA19249

DATA

Western blot analysis of TMED4 expression in HepG2 (A) whole cell lysates. (Predicted band size: 25 kD; Observed band size: 26 kD)

STORAGE

Store at 4°C short term. For long term storage, store at -20°C, avoiding freeze/thaw cycles.

NOTE

For Research Use Only. Not for diagnostic, therapeutics, prophylactic or in vivo use.