

**DATASHEET**

**NAT8L Rabbit Polyclonal Antibody**

CAT. NO. APA19255

**KEY FEATURES**

|               |   |               |                     |
|---------------|---|---------------|---------------------|
| Target        | NAT8L   | Source / Host | Rabbit              |
| Reactivity    | Human   | Clonality     | Polyclonal          |
| Applications  | WB, IHC   | Conjugation   | Unconjugated        |
| Form / Buffer | Liquid in 0.42% Potassium phosphate, 0.87% Sodium chloride, pH 7.3, 30% glycerol, and 0.01% sodium azide. |               | Storage<br>at -20°C |

**BACKGROUND**

Catalyzes the synthesis of N-acetylaspartate acid (NAA) from L-aspartate and acetyl-CoA from L-aspartate and acetyl-CoA . Promotes dopamine uptake by regulating TNF expression . Attenuates methamphetamine-induced inhibition of dopamine uptake .

**APPLICATION**

To ensure optimal assay performance, AREX recommends conducting reagent titration tailored to each testing system for optimal detection results.

|     |                |
|-----|----------------|
| WB  | 1:500 - 1:1000 |
| IHC | 1:50 - 1:100   |

\*Results are sample-specific. Please refer to your local assay conditions and test parameters for reference.

**PRODUCT OVERVIEW**

|                   |   |
|-------------------|---|
| Description       | Rabbit polyclonal antibody to NAT8L   |
| Specificity       | Recognizes endogenous levels of NAT8L protein.  |
| Antibody Type     | Primary antibody  |
| Immunogen         | KLH-conjugated synthetic peptide encompassing a sequence within the Central region of human NAT8L. The exact sequence is proprietary. |
| Purification      | The antibody was purified by immunogen affinity chromatography.   |
| Molecular Weight  | Predicted: 32 kD; Observed: 36 kD   |
| Form/Buffer       | Liquid in 0.42% Potassium phosphate, 0.87% Sodium chloride, pH 7.3, 30% glycerol, and 0.01% sodium azide.                             |
| Alternative Names | CML3; N-acetylaspartate synthetase; NAA synthetase; Camello-like protein 3; N-acetyltransferase 8-like protein                        |
| Gene Symbol       | NAT8L   |
| Entrez Gene       | 339983(Human)   |
| SwissProt         | Q8N9F0(Human)   |

\*AREX continuously optimizes our products. Webpage content may not reflect the latest updates. For inquiries, please contact [info@arexbio.com](mailto:info@arexbio.com) or your local distributor.

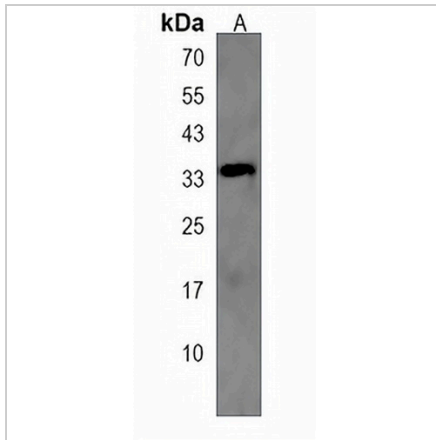
\*Clone Number, Reactivity, Source/Host and Clonality can be found in the product name and Key Features section above.

**DATASHEET**

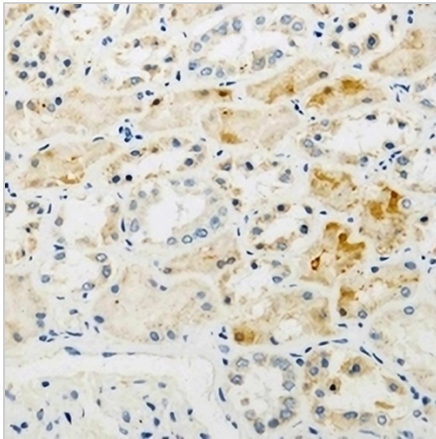
**NAT8L Rabbit Polyclonal Antibody**

CAT. NO. APA19255

**DATA**



Western blot analysis of NAT8L expression in U87MG (A) whole cell lysates. (Predicted band size: 32 kD; Observed band size: 36 kD)



Immunohistochemical analysis of NAT8L staining in human kidney formalin fixed paraffin embedded tissue section. The section was pre-treated using heat mediated antigen retrieval with sodium citrate buffer (pH 6.0). The section was then incubated with the antibody at room temperature and detected using an HRP conjugated compact polymer system. DAB was used as the chromogen. The section was then counterstained with haematoxylin and mounted with DPX.

**STORAGE**

Store at 4°C short term. For long term storage, store at -20°C, avoiding freeze/thaw cycles.

**NOTE**

For Research Use Only. Not for diagnostic, therapeutics, prophylactic or in vivo use.