

DATASHEET

SAPCD2 Rabbit Polyclonal Antibody

CAT. NO. APA19260

KEY FEATURES

Target	SAPCD2	Source / Host	Rabbit
Reactivity	Human	Clonality	Polyclonal
Applications	WB	Conjugation	Unconjugated
Form / Buffer	Liquid in 0.42% Potassium phosphate, 0.87% Sodium chloride, pH 7.3, 30% glycerol, and 0.01% sodium azide.		Storage at -20°C

BACKGROUND

Plays a role in planar mitotic spindle orientation in retinal progenitor cells (RPCs) and promotes the production of symmetric terminal divisions . Negatively regulates the mitotic apical cortex localization of GPSM2 and promotes the production of symmetric terminal divisions . Negatively regulates the mitotic apical cortex localization of GPSM2 . Involved also in positive regulation of cell proliferation and tumor cell growth .

APPLICATION

To ensure optimal assay performance, AREX recommends conducting reagent titration tailored to each testing system for optimal detection results.

WB	1:500 - 1:1000
----	----------------

*Results are sample-specific. Please refer to your local assay conditions and test parameters for reference.

PRODUCT OVERVIEW

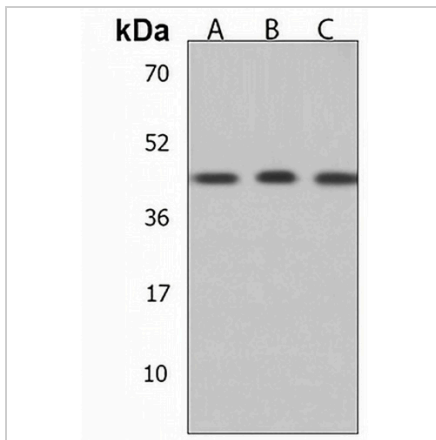
Description	Rabbit polyclonal antibody to SAPCD2
Specificity	Recognizes endogenous levels of SAPCD2 protein.
Antibody Type	Primary antibody
Immunogen	KLH-conjugated synthetic peptide encompassing a sequence within the C-terminal region of human SAPCD2. The exact sequence is proprietary.
Purification	The antibody was purified by immunogen affinity chromatography.
Molecular Weight	Predicted: 42 kD; Observed: 43 kD
Form/Buffer	Liquid in 0.42% Potassium phosphate, 0.87% Sodium chloride, pH 7.3, 30% glycerol, and 0.01% sodium azide.
Alternative Names	C9orf140; Suppressor APC domain-containing protein 2; Tumor specificity and mitosis phase-dependent expression protein; TS/MDEP; p42.3
Gene Symbol	SAPCD2
Entrez Gene	89958(Human)
SwissProt	Q86UD0(Human)

*AREX continuously optimizes our products. Webpage content may not reflect the latest updates. For inquiries, please contact info@arexbio.com or your local distributor.

*Clone Number, Reactivity, Source/Host and Clonality can be found in the product name and Key Features section above.

DATASHEET**SAPCD2 Rabbit Polyclonal Antibody**

CAT. NO. APA19260

DATA

Western blot analysis of SAPCD2 expression in HepG2 (A), MCF7 (B), PC3 (C) whole cell lysates. (Predicted band size: 42 kD; Observed band size: 43 kD)

STORAGE

Store at 4°C short term. For long term storage, store at -20°C, avoiding freeze/thaw cycles.

NOTE

For Research Use Only. Not for diagnostic, therapeutics, prophylactic or in vivo use.