

DATASHEET

PCNXL2 Rabbit Polyclonal Antibody

CAT. NO. APA19263

KEY FEATURES

Target	PCNXL2	Source / Host	Rabbit
Reactivity	Human	Clonality	Polyclonal
Applications	WB	Conjugation	Unconjugated
Form / Buffer	Liquid in 0.42% Potassium phosphate, 0.87% Sodium chloride, pH 7.3, 30% glycerol, and 0.01% sodium azide.		Storage at -20°C

BACKGROUND

May play a role in tumorigenesis of colorectal carcinomas with high microsatellite instability (MSI-H).

APPLICATION

To ensure optimal assay performance, AREX recommends conducting reagent titration tailored to each testing system for optimal detection results.

WB	1:500 - 1:1000
----	----------------

*Results are sample-specific. Please refer to your local assay conditions and test parameters for reference.

PRODUCT OVERVIEW

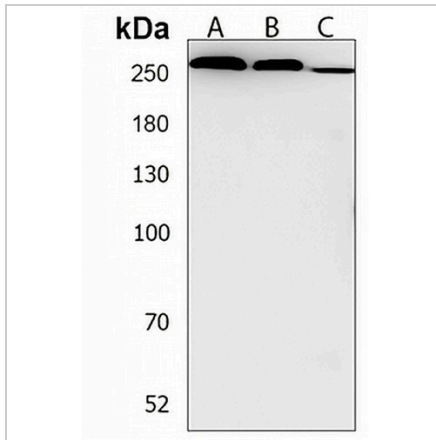
Description	Rabbit polyclonal antibody to PCNXL2
Specificity	Recognizes endogenous levels of PCNXL2 protein.
Antibody Type	Primary antibody
Immunogen	KLH-conjugated synthetic peptide encompassing a sequence within the Central region of human PCNXL2. The exact sequence is proprietary.
Purification	The antibody was purified by immunogen affinity chromatography.
Molecular Weight	Predicted: 237 kD; Observed: 260 kD
Form/Buffer	Liquid in 0.42% Potassium phosphate, 0.87% Sodium chloride, pH 7.3, 30% glycerol, and 0.01% sodium azide.
Alternative Names	KIAA0435; Pecanex-like protein 2
Gene Symbol	PCNXL2
Entrez Gene	80003(Human)
SwissProt	A6NKB5(Human)

*AREX continuously optimizes our products. Webpage content may not reflect the latest updates. For inquiries, please contact info@arexbio.com or your local distributor.

*Clone Number, Reactivity, Source/Host and Clonality can be found in the product name and Key Features section above.

DATASHEET**PCNXL2 Rabbit Polyclonal Antibody**

CAT. NO. APA19263

DATA

Western blot analysis of PCNXL2 expression in HeLa (A), HT29 (B), WiDr (C) whole cell lysates. (Predicted band size: 237 kD; Observed band size: 260 kD)

STORAGE

Store at 4°C short term. For long term storage, store at -20°C, avoiding freeze/thaw cycles.

NOTE

For Research Use Only. Not for diagnostic, therapeutics, prophylactic or in vivo use.