

DATASHEET

LARGE Rabbit Polyclonal Antibody

CAT. NO. APA19271

KEY FEATURES

Target	LARGE	Source / Host	Rabbit
Reactivity	Human	Clonality	Polyclonal
Applications	WB	Conjugation	Unconjugated
Form / Buffer	Liquid in 0.42% Potassium phosphate, 0.87% Sodium chloride, pH 7.3, 30% glycerol, and 0.01% sodium azide.		Storage at -20°C

BACKGROUND

Bifunctional glycosyltransferase with both alpha-1,3-xylosyltransferase and beta-1,3-glucuronyltransferase activities involved in the maturation of alpha-dystroglycan (DAG1) by glycosylation leading to DAG1 binding to laminin G-like domain-containing extracellular proteins with high affinity by glycosylation leading to DAG1 binding to laminin G-like domain-containing extracellular proteins with high affinity . Elongates the glucuronyl-beta-1,4-xylose-beta disaccharide primer structure initiated by B4GAT1 by adding repeating units [-3-Xylose-alpha-1,3-GlcA-beta-1-] to produce a heteropolysaccharide . Requires the phosphorylation of core M3 (O-mannosyl trisaccharide) by POMK to elongate the glucuronyl-beta-1,4-xylose-beta disaccharide primer .

APPLICATION

To ensure optimal assay performance, AREX recommends conducting reagent titration tailored to each testing system for optimal detection results.

WB	1:500 - 1:1000
----	----------------

*Results are sample-specific. Please refer to your local assay conditions and test parameters for reference.

PRODUCT OVERVIEW

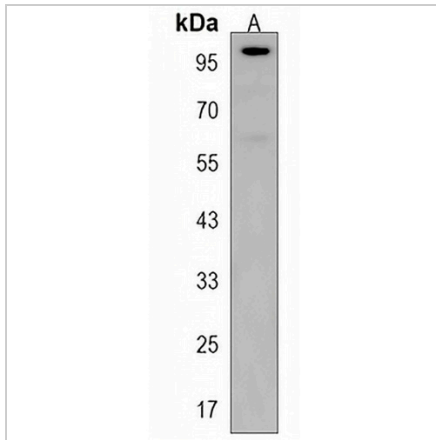
Description	Rabbit polyclonal antibody to LARGE
Specificity	Recognizes endogenous levels of LARGE protein.
Antibody Type	Primary antibody
Immunogen	KLH-conjugated synthetic peptide encompassing a sequence within the Central region of human LARGE. The exact sequence is proprietary.
Purification	The antibody was purified by immunogen affinity chromatography.
Molecular Weight	Predicted: 88 kD; Observed: 100 kD
Form/Buffer	Liquid in 0.42% Potassium phosphate, 0.87% Sodium chloride, pH 7.3, 30% glycerol, and 0.01% sodium azide.
Alternative Names	KIAA0609; LARGE1; Glycosyltransferase-like protein LARGE1; Acetylglucosaminyltransferase-like 1A
Gene Symbol	LARGE
Entrez Gene	9215(Human)
SwissProt	O95461(Human)

*AREX continuously optimizes our products. Webpage content may not reflect the latest updates. For inquiries, please contact info@arexbio.com or your local distributor.

*Clone Number, Reactivity, Source/Host and Clonality can be found in the product name and Key Features section above.

DATASHEET**LARGE Rabbit Polyclonal Antibody**

CAT. NO. APA19271

DATA

Western blot analysis of LARGE expression in Jurkat (A) whole cell lysates. (Predicted band size: 88 kD; Observed band size: 100 kD)

STORAGE

Store at 4°C short term. For long term storage, store at -20°C, avoiding freeze/thaw cycles.

NOTE

For Research Use Only. Not for diagnostic, therapeutics, prophylactic or in vivo use.