

DATASHEET

PDE2A Rabbit Polyclonal Antibody

CAT. NO. APA19275

KEY FEATURES

Target	PDE2A	Source / Host	Rabbit
Reactivity	Mouse	Clonality	Polyclonal
Applications	WB	Conjugation	Unconjugated
Form / Buffer	Liquid in 0.42% Potassium phosphate, 0.87% Sodium chloride, pH 7.3, 30% glycerol, and 0.01% sodium azide.		Storage at-20°C

BACKGROUND

Enables several functions, including 3',5'-cyclic-nucleotide phosphodiesterase activity; anion binding activity; and metal ion binding activity. Involved in several processes, including cellular response to cytokine stimulus; regulation of signal transduction; and regulation of vascular permeability. Located in several cellular components, including cytosol; mitochondrial membrane; and perinuclear region of cytoplasm.

APPLICATION

To ensure optimal assay performance, AREX recommends conducting reagent titration tailored to each testing system for optimal detection results.

WB	1:500 - 1:1000
----	----------------

*Results are sample-specific. Please refer to your local assay conditions and test parameters for reference.

PRODUCT OVERVIEW

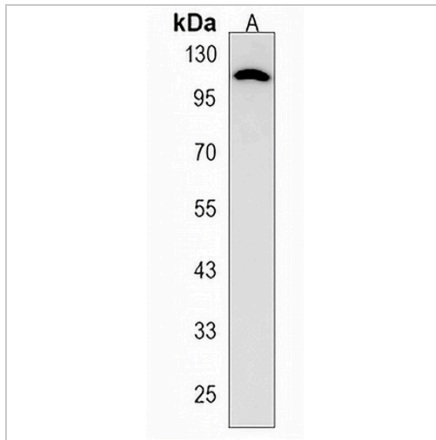
Description	Rabbit polyclonal antibody to PDE2A
Specificity	Recognizes endogenous levels of PDE2A protein.
Antibody Type	Primary antibody
Immunogen	KLH-conjugated synthetic peptide encompassing a sequence within the Central region of human PDE2A. The exact sequence is proprietary.
Purification	The antibody was purified by immunogen affinity chromatography.
Molecular Weight	Predicted: 105 kD; Observed: 106 kD
Form/Buffer	Liquid in 0.42% Potassium phosphate, 0.87% Sodium chloride, pH 7.3, 30% glycerol, and 0.01% sodium azide.
Alternative Names	cGMP-dependent 3',5'-cyclic phosphodiesterase; Cyclic GMP-stimulated phosphodiesterase; CGS-PDE; cGSPDE
Gene Symbol	PDE2A
Entrez Gene	207728(Mouse)
SwissProt	Q922S4(Mouse)

*AREX continuously optimizes our products. Webpage content may not reflect the latest updates. For inquiries, please contact info@arexbio.com or your local distributor.

*Clone Number, Reactivity, Source/Host and Clonality can be found in the product name and Key Features section above.

DATASHEET**PDE2A Rabbit Polyclonal Antibody**

CAT. NO. APA19275

DATA

Western blot analysis of PDE2A expression in mouse brain (A) whole cell lysates.
(Predicted band size: 105 kD; Observed band size: 106 kD)

STORAGE

Store at 4°C short term. For long term storage, store at -20°C, avoiding freeze/thaw cycles.

NOTE

For Research Use Only. Not for diagnostic, therapeutics, prophylactic or in vivo use.