

DATASHEET

PGLYRP2 Rabbit Polyclonal Antibody

CAT. NO. APA19276

KEY FEATURES

Target	PGLYRP2	Source / Host	Rabbit
Reactivity	Human	Clonality	Polyclonal
Applications	WB	Conjugation	Unconjugated
Form / Buffer	Liquid in 0.42% Potassium phosphate, 0.87% Sodium chloride, pH 7.3, 30% glycerol, and 0.01% sodium azide.		Storage at -20°C

BACKGROUND

May play a scavenger role by digesting biologically active peptidoglycan (PGN) into biologically inactive fragments. Has no direct bacteriolytic activity.

APPLICATION

To ensure optimal assay performance, AREX recommends conducting reagent titration tailored to each testing system for optimal detection results.

WB	1:500 - 1:1000
----	----------------

*Results are sample-specific. Please refer to your local assay conditions and test parameters for reference.

PRODUCT OVERVIEW

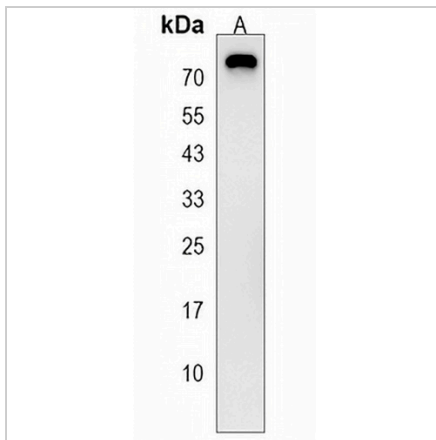
Description	Rabbit polyclonal antibody to PGLYRP2
Specificity	Recognizes endogenous levels of PGLYRP2 protein.
Antibody Type	Primary antibody
Immunogen	KLH-conjugated synthetic peptide encompassing a sequence within the Central region of human PGLYRP2. The exact sequence is proprietary.
Purification	The antibody was purified by immunogen affinity chromatography.
Molecular Weight	Predicted: 62 kD; Observed: 72 kD
Form/Buffer	Liquid in 0.42% Potassium phosphate, 0.87% Sodium chloride, pH 7.3, 30% glycerol, and 0.01% sodium azide.
Alternative Names	PGLYRPL; PGRPL; N-acetylmuramoyl-L-alanine amidase; Peptidoglycan recognition protein 2; Peptidoglycan recognition protein long; PGRP-L
Gene Symbol	PGLYRP2
Entrez Gene	114770(Human)
SwissProt	Q96PD5(Human)

*AREX continuously optimizes our products. Webpage content may not reflect the latest updates. For inquiries, please contact info@arexbio.com or your local distributor.

*Clone Number, Reactivity, Source/Host and Clonality can be found in the product name and Key Features section above.

DATASHEET**PGLYRP2 Rabbit Polyclonal Antibody**

CAT. NO. APA19276

DATA

Western blot analysis of PGLYRP2 expression in human placenta (A) whole cell lysates.
(Predicted band size: 62 kD; Observed band size: 72 kD)

STORAGE

Store at 4°C short term. For long term storage, store at -20°C, avoiding freeze/thaw cycles.

NOTE

For Research Use Only. Not for diagnostic, therapeutics, prophylactic or in vivo use.