

**DATASHEET**

**SLC5A8 Rabbit Polyclonal Antibody**

CAT. NO. APA19277

**KEY FEATURES**

Target	SLC5A8	Source / Host	Rabbit
Reactivity	Human	Clonality	Polyclonal
Applications	WB	Conjugation	Unconjugated
Form / Buffer	Liquid in 0.42% Potassium phosphate, 0.87% Sodium chloride, pH 7.3, 30% glycerol, and 0.01% sodium azide.		Storage at -20°C

**BACKGROUND**

Acts as an electrogenic sodium (Na<sup>+</sup>) and chloride (Cl<sup>-</sup>)-dependent sodium-coupled solute transporter, including transport of monocarboxylates (short-chain fatty acids including L-lactate, D-lactate, pyruvate, acetate, propionate, valerate and butyrate), monocarboxylate drugs (nicotinate, benzoate, salicylate and 5-aminosalicylate) and ketone bodies (beta-D-hydroxybutyrate, acetoacetate and alpha-ketoisocaproate), with a Na<sup>+</sup>:substrate stoichiometry of between 4:1 and 2:1 ) and chloride (Cl<sup>-</sup>)-dependent sodium-coupled solute transporter, including transport of monocarboxylates (short-chain fatty acids including L-lactate, D-lactate, pyruvate, acetate, propionate, valerate and butyrate), monocarboxylate drugs (nicotinate, benzoate,

**APPLICATION**

To ensure optimal assay performance, AREX recommends conducting reagent titration tailored to each testing system for optimal detection results.

WB	1:500 - 1:1000
----	----------------

\*Results are sample-specific. Please refer to your local assay conditions and test parameters for reference.

**PRODUCT OVERVIEW**

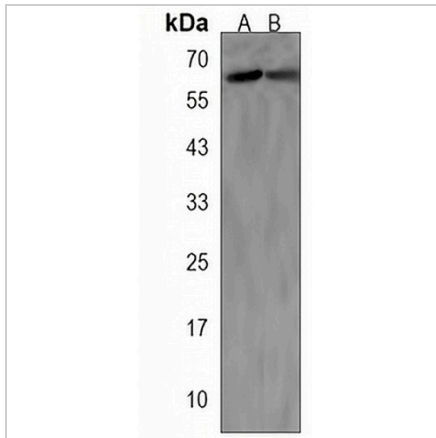
Description	Rabbit polyclonal antibody to SLC5A8
Specificity	Recognizes endogenous levels of SLC5A8 protein.
Antibody Type	Primary antibody
Immunogen	KLH-conjugated synthetic peptide encompassing a sequence within the C-terminal region of human SLC5A8. The exact sequence is proprietary.
Purification	The antibody was purified by immunogen affinity chromatography.
Molecular Weight	Predicted: 66 kD; Observed: 67 kD
Form/Buffer	Liquid in 0.42% Potassium phosphate, 0.87% Sodium chloride, pH 7.3, 30% glycerol, and 0.01% sodium azide.
Alternative Names	AIT; SMCT; SMCT1; Sodium-coupled monocarboxylate transporter 1; Apical iodide transporter; Electrogenic sodium monocarboxylate cotransporter; Sodium iodide-related cotransporter; Solute carrier family 5 member 8
Gene Symbol	SLC5A8
Entrez Gene	160728(Human)
SwissProt	Q8N695(Human)

\*AREX continuously optimizes our products. Webpage content may not reflect the latest updates. For inquiries, please contact [info@arexbio.com](mailto:info@arexbio.com) or your local distributor.

\*Clone Number, Reactivity, Source/Host and Clonality can be found in the product name and Key Features section above.

**DATASHEET****SLC5A8 Rabbit Polyclonal Antibody**

CAT. NO. APA19277

**DATA**

Western blot analysis of SLC5A8 expression in SKBR3 (A), TT (B) whole cell lysates. (Predicted band size: 66 kD; Observed band size: 67 kD)

**STORAGE**

Store at 4°C short term. For long term storage, store at -20°C, avoiding freeze/thaw cycles.

**NOTE**

For Research Use Only. Not for diagnostic, therapeutics, prophylactic or in vivo use.