

DATASHEET

PPAPDC1B Rabbit Polyclonal Antibody

CAT. NO. APA19278

KEY FEATURES

Target	PPAPDC1B	Source / Host	Rabbit
Reactivity	Human	Clonality	Polyclonal
Applications	WB	Conjugation	Unconjugated
Form / Buffer	Liquid in 0.42% Potassium phosphate, 0.87% Sodium chloride, pH 7.3, 30% glycerol, and 0.01% sodium azide.		Storage at-20°C

BACKGROUND

Magnesium-independent phospholipid phosphatase with broad substrate specificity . Preferentially catalyzes the conversion of diacylglycerol pyrophosphate into phosphatidate but can also act on phosphatidate and lysophosphatidate . Phospholipid phosphatases are involved in both the synthesis of lipids and the generation or degradation of lipid-signaling molecules .

APPLICATION

To ensure optimal assay performance, AREX recommends conducting reagent titration tailored to each testing system for optimal detection results.

WB	1:500 - 1:1000
----	----------------

*Results are sample-specific. Please refer to your local assay conditions and test parameters for reference.

PRODUCT OVERVIEW

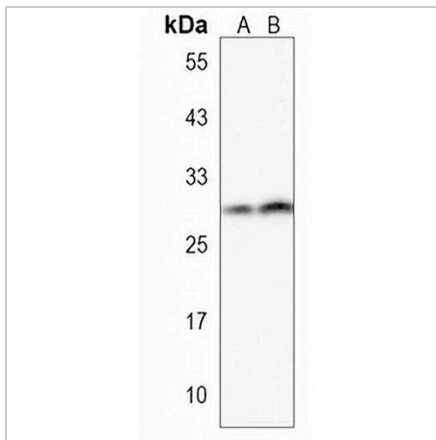
Description	Rabbit polyclonal antibody to PPAPDC1B
Specificity	Recognizes endogenous levels of PPAPDC1B protein.
Antibody Type	Primary antibody
Immunogen	KLH-conjugated synthetic peptide encompassing a sequence within the Central region of human PPAPDC1B. The exact sequence is proprietary.
Purification	The antibody was purified by immunogen affinity chromatography.
Molecular Weight	Predicted: 29 kD; Observed: 29 kD
Form/Buffer	Liquid in 0.42% Potassium phosphate, 0.87% Sodium chloride, pH 7.3, 30% glycerol, and 0.01% sodium azide.
Alternative Names	DPPL1; HTPAP; Phosphatidate phosphatase PPAPDC1B; Phosphatidic acid phosphatase type 2 domain-containing protein 1B
Gene Symbol	PPAPDC1B
Entrez Gene	84513(Human)
SwissProt	Q8NEB5(Human)

*AREX continuously optimizes our products. Webpage content may not reflect the latest updates. For inquiries, please contact info@arexbio.com or your local distributor.

*Clone Number, Reactivity, Source/Host and Clonality can be found in the product name and Key Features section above.

DATASHEET**PPAPDC1B Rabbit Polyclonal Antibody**

CAT. NO. APA19278

DATA

Western blot analysis of PPAPDC1B expression in RPMI 8226 (A), SHSY5Y (B) whole cell lysates. (Predicted band size: 29 kD; Observed band size: 29 kD)

STORAGE

Store at 4°C short term. For long term storage, store at -20°C, avoiding freeze/thaw cycles.

NOTE

For Research Use Only. Not for diagnostic, therapeutics, prophylactic or in vivo use.