

**DATASHEET**

**LPGAT1 Rabbit Polyclonal Antibody**

CAT. NO. APA19282

**KEY FEATURES**

Target	LPGAT1	Source / Host	Rabbit
Reactivity	Human	Clonality	Polyclonal
Applications	WB	Conjugation	Unconjugated
Form / Buffer	Liquid in 0.42% Potassium phosphate, 0.87% Sodium chloride, pH 7.3, 30% glycerol, and 0.01% sodium azide.		Storage at-20°C

**BACKGROUND**

Lysophospholipid acyltransferase involved in fatty acyl chain remodeling of glycerophospholipids in the endoplasmic reticulum membrane . Selectively catalyzes the transfer and esterification of saturated long-chain fatty acids from acyl-CoA to the sn-1 position of 1-lyso-2-acyl phosphatidylethanolamines (1-lyso-PE, LPE), with a preference for stearoyl CoA over palmitoyl CoA as acyl donor , with a preference for stearoyl CoA over palmitoyl CoA as acyl donor . Acts in concert with an unknown phospholipase A1 to convert palmitate phosphatidylethanolamine (PE) species into stearate ones.

**APPLICATION**

To ensure optimal assay performance, AREX recommends conducting reagent titration tailored to each testing system for optimal detection results.

WB	1:500 - 1:1000
----	----------------

\*Results are sample-specific. Please refer to your local assay conditions and test parameters for reference.

**PRODUCT OVERVIEW**

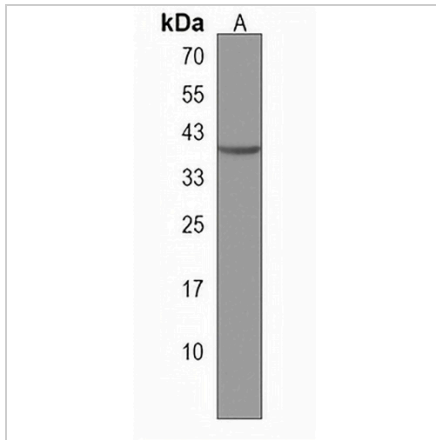
Description	Rabbit polyclonal antibody to LPGAT1
Specificity	Recognizes endogenous levels of LPGAT1 protein.
Antibody Type	Primary antibody
Immunogen	KLH-conjugated synthetic peptide encompassing a sequence within the Central region of human LPGAT1. The exact sequence is proprietary.
Purification	The antibody was purified by immunogen affinity chromatography.
Molecular Weight	Predicted: 43 kD; Observed: 43 kD
Form/Buffer	Liquid in 0.42% Potassium phosphate, 0.87% Sodium chloride, pH 7.3, 30% glycerol, and 0.01% sodium azide.
Alternative Names	FAM34A; KIAA0205; Acyl-CoA:lysophosphatidylglycerol acyltransferase 1
Gene Symbol	LPGAT1
Entrez Gene	9926(Human)
SwissProt	Q92604(Human)

\*AREX continuously optimizes our products. Webpage content may not reflect the latest updates. For inquiries, please contact [info@arexbio.com](mailto:info@arexbio.com) or your local distributor.

\*Clone Number, Reactivity, Source/Host and Clonality can be found in the product name and Key Features section above.

**DATASHEET****LPGAT1 Rabbit Polyclonal Antibody**

CAT. NO. APA19282

**DATA**

Western blot analysis of LPGAT1 expression in HeLa (A) whole cell lysates. (Predicted band size: 43 kD; Observed band size: 43 kD)

**STORAGE**

Store at 4°C short term. For long term storage, store at -20°C, avoiding freeze/thaw cycles.

**NOTE**

For Research Use Only. Not for diagnostic, therapeutics, prophylactic or in vivo use.