

**DATASHEET**

**PLA2G4F Rabbit Polyclonal Antibody**

CAT. NO. APA19289

**KEY FEATURES**

Target	PLA2G4F	Source / Host	Rabbit
Reactivity	Human, Mouse	Clonality	Polyclonal
Applications	WB	Conjugation	Unconjugated
Form / Buffer	Liquid in 0.42% Potassium phosphate, 0.87% Sodium chloride, pH 7.3, 30% glycerol, and 0.01% sodium azide.		Storage at -20°C

**BACKGROUND**

Has calcium-dependent phospholipase and lysophospholipase activities with a potential role in membrane lipid remodeling and biosynthesis of lipid mediators . Preferentially hydrolyzes the ester bond of the fatty acyl group attached at sn-2 position of phospholipids (phospholipase A2 activity) . Selectively hydrolyzes sn-2 arachidonoyl group from membrane phospholipids, providing the precursor for eicosanoid biosynthesis . In myocardial mitochondria, plays a major role in arachidonate release that is metabolically channeled to the formation of cardioprotective eicosanoids, epoxyeicosatrienoates (EETs) .

**APPLICATION**

To ensure optimal assay performance, AREX recommends conducting reagent titration tailored to each testing system for optimal detection results.

WB	1:500 - 1:1000
----	----------------

\*Results are sample-specific. Please refer to your local assay conditions and test parameters for reference.

**PRODUCT OVERVIEW**

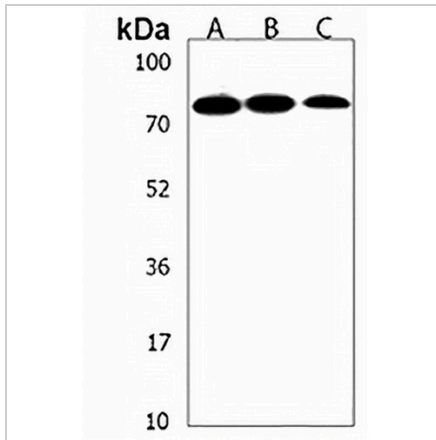
Description	Rabbit polyclonal antibody to PLA2G4F
Specificity	Recognizes endogenous levels of PLA2G4F protein.
Antibody Type	Primary antibody
Immunogen	KLH-conjugated synthetic peptide encompassing a sequence within the Central region of human PLA2G4F. The exact sequence is proprietary.
Purification	The antibody was purified by immunogen affinity chromatography.
Molecular Weight	Predicted: 95 kD; Observed: 75 kD
Form/Buffer	Liquid in 0.42% Potassium phosphate, 0.87% Sodium chloride, pH 7.3, 30% glycerol, and 0.01% sodium azide.
Alternative Names	Cytosolic phospholipase A2 zeta; cPLA2-zeta; Phospholipase A2 group IVF
Gene Symbol	PLA2G4F
Entrez Gene	255189(Human); 271844(Mouse)
SwissProt	Q68DD2(Human); Q50L41(Mouse)

\*AREX continuously optimizes our products. Webpage content may not reflect the latest updates. For inquiries, please contact [info@arexbio.com](mailto:info@arexbio.com) or your local distributor.

\*Clone Number, Reactivity, Source/Host and Clonality can be found in the product name and Key Features section above.

**DATASHEET****PLA2G4F Rabbit Polyclonal Antibody**

CAT. NO. APA19289

**DATA**

Western blot analysis of PLA2G4F expression in 293T (A), Raji (B), mouse stomach (C) whole cell lysates. (Predicted band size: 95 kD; Observed band size: 75 kD)

**STORAGE**

Store at 4°C short term. For long term storage, store at -20°C, avoiding freeze/thaw cycles.

**NOTE**

For Research Use Only. Not for diagnostic, therapeutics, prophylactic or in vivo use.