

DATASHEET

GMPPB Rabbit Polyclonal Antibody

CAT. NO. APA19290

KEY FEATURES

Target	GMPPB	Source / Host	Rabbit
Reactivity	Human, Mouse	Clonality	Polyclonal
Applications	WB	Conjugation	Unconjugated
Form / Buffer	Liquid in 0.42% Potassium phosphate, 0.87% Sodium chloride, pH 7.3, 30% glycerol, and 0.01% sodium azide.		Storage at-20°C

BACKGROUND

Catalytic subunit of the GMPPA-GMPPB mannose-1-phosphate guanylyltransferase complex . Catalyzes the formation of GDP-mannose, an essential precursor of glycan moieties of glycoproteins and glycolipids . Can catalyze the reverse reaction in vitro . Together with GMPPA regulates GDP-alpha-D-mannose levels .

APPLICATION

To ensure optimal assay performance, AREX recommends conducting reagent titration tailored to each testing system for optimal detection results.

WB	1:500 - 1:1000
----	----------------

*Results are sample-specific. Please refer to your local assay conditions and test parameters for reference.

PRODUCT OVERVIEW

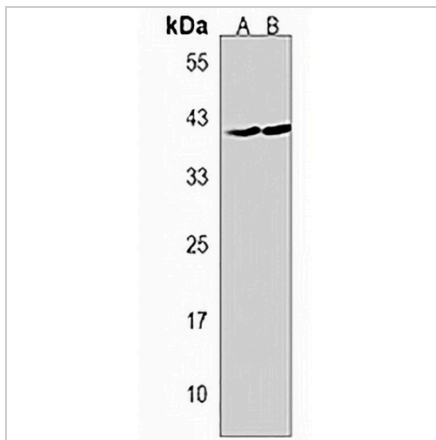
Description	Rabbit polyclonal antibody to GMPPB
Specificity	Recognizes endogenous levels of GMPPB protein.
Antibody Type	Primary antibody
Immunogen	KLH-conjugated synthetic peptide encompassing a sequence within the N-terminal region of human GMPPB. The exact sequence is proprietary.
Purification	The antibody was purified by immunogen affinity chromatography.
Molecular Weight	Predicted: 39 kD; Observed: 40 kD
Form/Buffer	Liquid in 0.42% Potassium phosphate, 0.87% Sodium chloride, pH 7.3, 30% glycerol, and 0.01% sodium azide.
Alternative Names	Mannose-1-phosphate guanyltransferase beta; GDP-mannose pyrophosphorylase B; GTP-mannose-1-phosphate guanylyltransferase beta
Gene Symbol	GMPPB
Entrez Gene	29925(Human); 331026(Mouse)
SwissProt	Q9Y5P6(Human); Q8BTZ7(Mouse)

*AREX continuously optimizes our products. Webpage content may not reflect the latest updates. For inquiries, please contact info@arexbio.com or your local distributor.

*Clone Number, Reactivity, Source/Host and Clonality can be found in the product name and Key Features section above.

DATASHEET**GMPPB Rabbit Polyclonal Antibody**

CAT. NO. APA19290

DATA

Western blot analysis of GMPPB expression in human pancreas (A), mouse pancreas (B) whole cell lysates. (Predicted band size: 39 kD; Observed band size: 40 kD)

STORAGE

Store at 4°C short term. For long term storage, store at -20°C, avoiding freeze/thaw cycles.

NOTE

For Research Use Only. Not for diagnostic, therapeutics, prophylactic or in vivo use.