

**DATASHEET**

**SLC6A19 Rabbit Polyclonal Antibody**

CAT. NO. APA19294

**KEY FEATURES**

Target	SLC6A19	Source / Host	Rabbit
Reactivity	Human	Clonality	Polyclonal
Applications	WB	Conjugation	Unconjugated
Form / Buffer	Liquid in 0.42% Potassium phosphate, 0.87% Sodium chloride, pH 7.3, 30% glycerol, and 0.01% sodium azide.		Storage at-20°C

**BACKGROUND**

Transporter that mediates resorption of neutral amino acids across the apical membrane of renal and intestinal epithelial cells . This uptake is sodium-dependent and chloride-independent . Requires CLTRN in kidney or ACE2 in intestine for cell surface expression and amino acid transporter activity .

**APPLICATION**

To ensure optimal assay performance, AREX recommends conducting reagent titration tailored to each testing system for optimal detection results.

WB	1:500 - 1:1000
----	----------------

\*Results are sample-specific. Please refer to your local assay conditions and test parameters for reference.

**PRODUCT OVERVIEW**

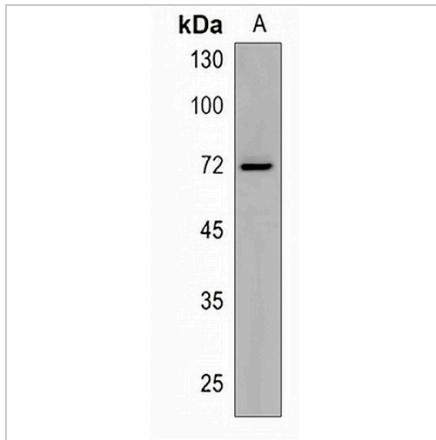
Description	Rabbit polyclonal antibody to SLC6A19
Specificity	Recognizes endogenous levels of SLC6A19 protein.
Antibody Type	Primary antibody
Immunogen	KLH-conjugated synthetic peptide encompassing a sequence within the Central region of human SLC6A19. The exact sequence is proprietary.
Purification	The antibody was purified by immunogen affinity chromatography.
Molecular Weight	Predicted: 71 kD; Observed: 71 kD
Form/Buffer	Liquid in 0.42% Potassium phosphate, 0.87% Sodium chloride, pH 7.3, 30% glycerol, and 0.01% sodium azide.
Alternative Names	B0AT1; Sodium-dependent neutral amino acid transporter B(0)AT1; Solute carrier family 6 member 19; System B(0) neutral amino acid transporter AT1
Gene Symbol	SLC6A19
Entrez Gene	340024(Human)
SwissProt	Q695T7(Human)

\*AREX continuously optimizes our products. Webpage content may not reflect the latest updates. For inquiries, please contact [info@arexbio.com](mailto:info@arexbio.com) or your local distributor.

\*Clone Number, Reactivity, Source/Host and Clonality can be found in the product name and Key Features section above.

**DATASHEET****SLC6A19 Rabbit Polyclonal Antibody**

CAT. NO. APA19294

**DATA**

Western blot analysis of SLC6A19 expression in 293 (A) whole cell lysates. (Predicted band size: 71 kD; Observed band size: 71 kD)

**STORAGE**

Store at 4°C short term. For long term storage, store at -20°C, avoiding freeze/thaw cycles.

**NOTE**

For Research Use Only. Not for diagnostic, therapeutics, prophylactic or in vivo use.