

DATASHEET

JMJD1C Rabbit Polyclonal Antibody

CAT. NO. APA19296

KEY FEATURES

Target	JMJD1C	Source / Host	Rabbit
Reactivity	Human	Clonality	Polyclonal
Applications	WB	Conjugation	Unconjugated
Form / Buffer	Liquid in 0.42% Potassium phosphate, 0.87% Sodium chloride, pH 7.3, 30% glycerol, and 0.01% sodium azide.		Storage at -20°C

BACKGROUND

Demethylates lysine in proteins, such as STAT3 or MDC1 . Demethylates MDC1, thereby promoting MDC1-RNF8 interaction and facilitating RNF8-dependent MDC1 ubiquitination essential for double-strand break (DSB) repair . Demethylation of STAT3 at 'Lys-140' facilitates its interactions with the phosphatase PTPN6 and restrains STAT3 activation . It is uncertain whether JMJD1C removes methyl groups from histone proteins as the other JMJD1/KDM3 proteins do . Nevertheless, JMJD1C may act as a context-specific histone demethylase. Implicated in lipogenic gene transcription in the liver, where USF1 recruits JMJD1C to lipogenic promoters in response to insulin or feeding stimuli, thereby potentially promoting H3K9me2 demethylation and enhancing chromatin accessibility .

APPLICATION

To ensure optimal assay performance, AREX recommends conducting reagent titration tailored to each testing system for optimal detection results.

WB	1:500 - 1:1000
----	----------------

*Results are sample-specific. Please refer to your local assay conditions and test parameters for reference.

PRODUCT OVERVIEW

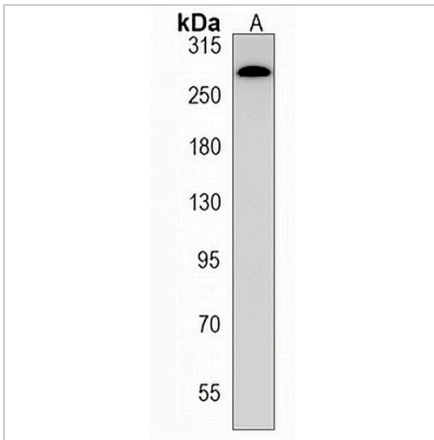
Description	Rabbit polyclonal antibody to JMJD1C
Specificity	Recognizes endogenous levels of JMJD1C protein.
Antibody Type	Primary antibody
Immunogen	KLH-conjugated synthetic peptide encompassing a sequence within the Central region of human JMJD1C. The exact sequence is proprietary.
Purification	The antibody was purified by immunogen affinity chromatography.
Molecular Weight	Predicted: 284 kD; Observed: 285 kD
Form/Buffer	Liquid in 0.42% Potassium phosphate, 0.87% Sodium chloride, pH 7.3, 30% glycerol, and 0.01% sodium azide.
Alternative Names	JHDM2C; KIAA1380; TRIP8; Probable JmjC domain-containing histone demethylation protein 2C; Jumonji domain-containing protein 1C; Thyroid receptor-interacting protein 8; TR-interacting protein 8; TRIP-8
Gene Symbol	JMJD1C
Entrez Gene	221037(Human)
SwissProt	Q15652(Human)

*AREX continuously optimizes our products. Webpage content may not reflect the latest updates. For inquiries, please contact info@arexbio.com or your local distributor.

*Clone Number, Reactivity, Source/Host and Clonality can be found in the product name and Key Features section above.

DATASHEET**JMJD1C Rabbit Polyclonal Antibody**

CAT. NO. APA19296

DATA

Western blot analysis of JMJD1C expression in human brain (A) whole cell lysates.
(Predicted band size: 284 kD; Observed band size: 285 kD)

STORAGE

Store at 4°C short term. For long term storage, store at -20°C, avoiding freeze/thaw cycles.

NOTE

For Research Use Only. Not for diagnostic, therapeutics, prophylactic or in vivo use.