

DATASHEET

PRTN3 Rabbit Polyclonal Antibody

CAT. NO. APA19297

KEY FEATURES

Target	PRTN3	Source / Host	Rabbit
Reactivity	Human	Clonality	Polyclonal
Applications	WB	Conjugation	Unconjugated
Form / Buffer	Liquid in 0.42% Potassium phosphate, 0.87% Sodium chloride, pH 7.3, 30% glycerol, and 0.01% sodium azide.		Storage at -20°C

BACKGROUND

Serine protease that degrades elastin, fibronectin, laminin, vitronectin, and collagen types I, III, and IV (in vitro) . By cleaving and activating receptor F2RL1/PAR-2, enhances endothelial cell barrier function and thus vascular integrity during neutrophil transendothelial migration . Plays a role in neutrophil transendothelial migration, probably when associated with CD177 . Triggers inflammatory processes in neutrophils by interacting with ADGRG3 upstream of F2RL1/PAR2 activation .

APPLICATION

To ensure optimal assay performance, AREX recommends conducting reagent titration tailored to each testing system for optimal detection results.

WB	1:500 - 1:1000
----	----------------

*Results are sample-specific. Please refer to your local assay conditions and test parameters for reference.

PRODUCT OVERVIEW

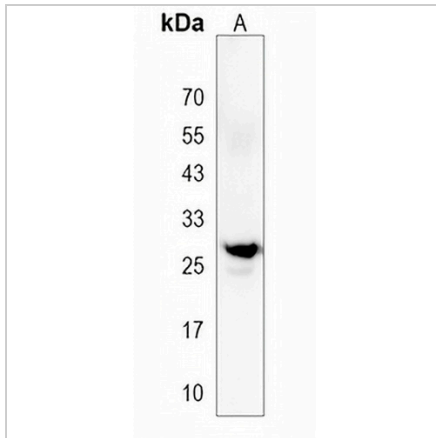
Description	Rabbit polyclonal antibody to PRTN3
Specificity	Recognizes endogenous levels of PRTN3 protein.
Antibody Type	Primary antibody
Immunogen	KLH-conjugated synthetic peptide encompassing a sequence within the C-terminal region of human PRTN3. The exact sequence is proprietary.
Purification	The antibody was purified by immunogen affinity chromatography.
Molecular Weight	Predicted: 27 kD; Observed: 26 kD
Form/Buffer	Liquid in 0.42% Potassium phosphate, 0.87% Sodium chloride, pH 7.3, 30% glycerol, and 0.01% sodium azide.
Alternative Names	MBN; Myeloblastin; AGP7; C-ANCA antigen; Leukocyte proteinase 3; PR-3; PR3; Neutrophil proteinase 4; NP-4; P29; Wegener autoantigen
Gene Symbol	PRTN3
Entrez Gene	5657(Human)
SwissProt	P24158(Human)

*AREX continuously optimizes our products. Webpage content may not reflect the latest updates. For inquiries, please contact info@arexbio.com or your local distributor.

*Clone Number, Reactivity, Source/Host and Clonality can be found in the product name and Key Features section above.

DATASHEET**PRTN3 Rabbit Polyclonal Antibody**

CAT. NO. APA19297

DATA

Western blot analysis of PRTN3 expression in human spleen (A) whole cell lysates.
(Predicted band size: 27 kD; Observed band size: 26 kD)

STORAGE

Store at 4°C short term. For long term storage, store at -20°C, avoiding freeze/thaw cycles.

NOTE

For Research Use Only. Not for diagnostic, therapeutics, prophylactic or in vivo use.