

DATASHEET

HEXDC Rabbit Polyclonal Antibody

CAT. NO. APA19307

KEY FEATURES

Target	HEXDC	Source / Host	Rabbit
Reactivity	Human	Clonality	Polyclonal
Applications	WB	Conjugation	Unconjugated
Form / Buffer	Liquid in 0.42% Potassium phosphate, 0.87% Sodium chloride, pH 7.3, 30% glycerol, and 0.01% sodium azide.		Storage at -20°C

BACKGROUND

Has hexosaminidase activity. Responsible for the cleavage of the monosaccharides N-acetylglucosamine (GlcNAc) and N-acetylgalactosamine (GalNAc) from cellular substrates. Has a preference for galactosaminide over glucosaminide substrates and N-acetylgalactosamine (GalNAc) from cellular substrates. Has a preference for galactosaminide over glucosaminide substrates .

APPLICATION

To ensure optimal assay performance, AREX recommends conducting reagent titration tailored to each testing system for optimal detection results.

WB	1:500 - 1:1000
----	----------------

*Results are sample-specific. Please refer to your local assay conditions and test parameters for reference.

PRODUCT OVERVIEW

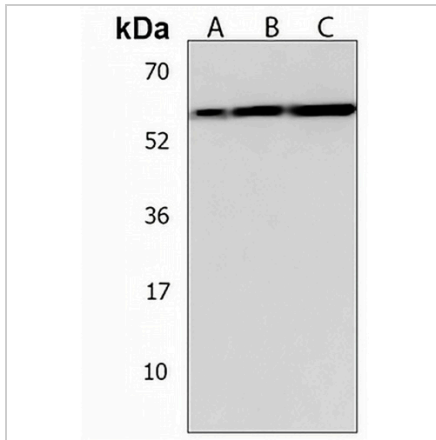
Description	Rabbit polyclonal antibody to HEXDC
Specificity	Recognizes endogenous levels of HEXDC protein.
Antibody Type	Primary antibody
Immunogen	KLH-conjugated synthetic peptide encompassing a sequence within the Central region of human HEXDC. The exact sequence is proprietary.
Purification	The antibody was purified by immunogen affinity chromatography.
Molecular Weight	Predicted: 53 kD; Observed: 56 kD
Form/Buffer	Liquid in 0.42% Potassium phosphate, 0.87% Sodium chloride, pH 7.3, 30% glycerol, and 0.01% sodium azide.
Alternative Names	Hexosaminidase D; Beta-N-acetylhexosaminidase; Beta-hexosaminidase D; Hexosaminidase domain-containing protein; N-acetyl-beta-galactosaminidase
Gene Symbol	HEXDC
Entrez Gene	284004(Human)
SwissProt	Q8WVB3(Human)

*AREX continuously optimizes our products. Webpage content may not reflect the latest updates. For inquiries, please contact info@arexbio.com or your local distributor.

*Clone Number, Reactivity, Source/Host and Clonality can be found in the product name and Key Features section above.

DATASHEET**HEXDC Rabbit Polyclonal Antibody**

CAT. NO. APA19307

DATA

Western blot analysis of HEXDC expression in 293 (A), Jurkat (B), SHSY5Y (C) whole cell lysates. (Predicted band size: 53 kD; Observed band size: 56 kD)

STORAGE

Store at 4°C short term. For long term storage, store at -20°C, avoiding freeze/thaw cycles.

NOTE

For Research Use Only. Not for diagnostic, therapeutics, prophylactic or in vivo use.