

DATASHEET

NAA40 Rabbit Polyclonal Antibody

CAT. NO. APA19308

KEY FEATURES

Target	NAA40	Source / Host	Rabbit
Reactivity	Human, Mouse	Clonality	Polyclonal
Applications	WB	Conjugation	Unconjugated
Form / Buffer	Liquid in 0.42% Potassium phosphate, 0.87% Sodium chloride, pH 7.3, 30% glycerol, and 0.01% sodium azide.		Storage at -20°C

BACKGROUND

N-alpha-acetyltransferase that specifically mediates the acetylation of the N-terminal residues of histones H4 and H2A . In contrast to other N-alpha-acetyltransferase, has a very specific selectivity for histones H4 and H2A N-terminus and specifically recognizes the 'Ser-Gly-Arg-Gly sequence' . Acts as a negative regulator of apoptosis . May play a role in hepatic lipid metabolism .

APPLICATION

To ensure optimal assay performance, AREX recommends conducting reagent titration tailored to each testing system for optimal detection results.

WB	1:500 - 1:1000
----	----------------

*Results are sample-specific. Please refer to your local assay conditions and test parameters for reference.

PRODUCT OVERVIEW

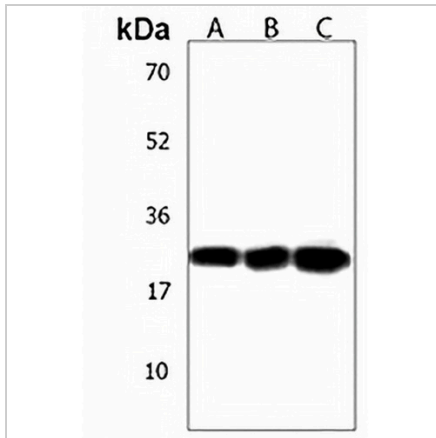
Description	Rabbit polyclonal antibody to NAA40
Specificity	Recognizes endogenous levels of NAA40 protein.
Antibody Type	Primary antibody
Immunogen	KLH-conjugated synthetic peptide encompassing a sequence within the C-terminal region of human NAA40. The exact sequence is proprietary.
Purification	The antibody was purified by immunogen affinity chromatography.
Molecular Weight	Predicted: 27 kD; Observed: 27 kD
Form/Buffer	Liquid in 0.42% Potassium phosphate, 0.87% Sodium chloride, pH 7.3, 30% glycerol, and 0.01% sodium azide.
Alternative Names	NAT11; N-alpha-acetyltransferase 40; N-acetyltransferase 11; NatD catalytic subunit
Gene Symbol	NAA40
Entrez Gene	79829(Human); 70999(Mouse)
SwissProt	Q86UY6(Human); Q8VE10(Mouse)

*AREX continuously optimizes our products. Webpage content may not reflect the latest updates. For inquiries, please contact info@arexbio.com or your local distributor.

*Clone Number, Reactivity, Source/Host and Clonality can be found in the product name and Key Features section above.

DATASHEET**NAA40 Rabbit Polyclonal Antibody**

CAT. NO. APA19308

DATA

Western blot analysis of NAA40 expression in human testis (A), mouse stomach (B), mouse spleen (C) whole cell lysates. (Predicted band size: 27 kD; Observed band size: 27 kD)

STORAGE

Store at 4°C short term. For long term storage, store at -20°C, avoiding freeze/thaw cycles.

NOTE

For Research Use Only. Not for diagnostic, therapeutics, prophylactic or in vivo use.