

DATASHEET

CSRNP1 Rabbit Polyclonal Antibody

CAT. NO. APA19312

KEY FEATURES

Target	CSRNP1	Source / Host	Rabbit
Reactivity	Human	Clonality	Polyclonal
Applications	WB	Conjugation	Unconjugated
Form / Buffer	Liquid in 0.42% Potassium phosphate, 0.87% Sodium chloride, pH 7.3, 30% glycerol, and 0.01% sodium azide.		Storage at -20°C

BACKGROUND

Binds to the consensus sequence 5'-AGAGTG-3' and has transcriptional activator activity . May have a tumor-suppressor function. May play a role in apoptosis.

APPLICATION

To ensure optimal assay performance, AREX recommends conducting reagent titration tailored to each testing system for optimal detection results.

WB	1:500 - 1:1000
----	----------------

*Results are sample-specific. Please refer to your local assay conditions and test parameters for reference.

PRODUCT OVERVIEW

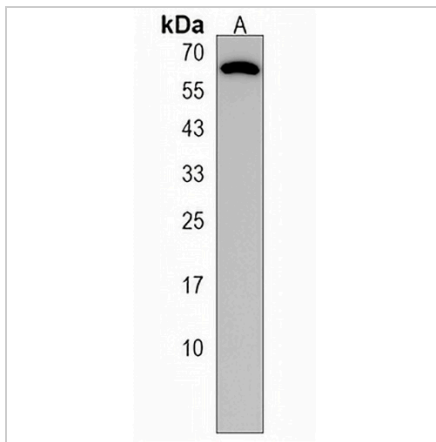
Description	Rabbit polyclonal antibody to CSRNP1
Specificity	Recognizes endogenous levels of CSRNP1 protein.
Antibody Type	Primary antibody
Immunogen	KLH-conjugated synthetic peptide encompassing a sequence within the Central region of human CSRNP1. The exact sequence is proprietary.
Purification	The antibody was purified by immunogen affinity chromatography.
Molecular Weight	Predicted: 63 kD; Observed: 64 kD
Form/Buffer	Liquid in 0.42% Potassium phosphate, 0.87% Sodium chloride, pH 7.3, 30% glycerol, and 0.01% sodium azide.
Alternative Names	AXUD1; TAIP3; Cysteine/serine-rich nuclear protein 1; CSRNP-1; Axin-1 up-regulated gene 1 protein; Protein URAX1; TGF-beta-induced apoptosis protein 3; TAIP-3
Gene Symbol	CSRNP1
Entrez Gene	64651(Human)
SwissProt	Q96S65(Human)

*AREX continuously optimizes our products. Webpage content may not reflect the latest updates. For inquiries, please contact info@arexbio.com or your local distributor.

*Clone Number, Reactivity, Source/Host and Clonality can be found in the product name and Key Features section above.

DATASHEET**CSRNP1 Rabbit Polyclonal Antibody**

CAT. NO. APA19312

DATA

Western blot analysis of CSRNP1 expression in human lung (A) whole cell lysates.
(Predicted band size: 63 kD; Observed band size: 64 kD)

STORAGE

Store at 4°C short term. For long term storage, store at -20°C, avoiding freeze/thaw cycles.

NOTE

For Research Use Only. Not for diagnostic, therapeutics, prophylactic or in vivo use.