

DATASHEET

CHTF8 Rabbit Polyclonal Antibody

CAT. NO. APA19313

KEY FEATURES

Target	CHTF8	Source / Host	Rabbit
Reactivity	Human	Clonality	Polyclonal
Applications	WB	Conjugation	Unconjugated
Form / Buffer	Liquid in 0.42% Potassium phosphate, 0.87% Sodium chloride, pH 7.3, 30% glycerol, and 0.01% sodium azide.		Storage at-20°C

BACKGROUND

Potential tumor suppressor. Inhibits prostate tumor cell growth, when overexpressed.

APPLICATION

To ensure optimal assay performance, AREX recommends conducting reagent titration tailored to each testing system for optimal detection results.

WB	1:500 - 1:1000
----	----------------

*Results are sample-specific. Please refer to your local assay conditions and test parameters for reference.

PRODUCT OVERVIEW

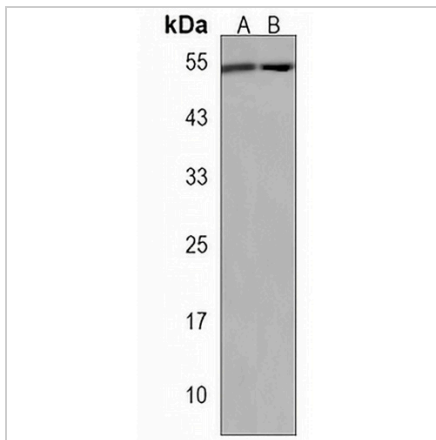
Description	Rabbit polyclonal antibody to CHTF8
Specificity	Recognizes endogenous levels of CHTF8 protein.
Antibody Type	Primary antibody
Immunogen	KLH-conjugated synthetic peptide encompassing a sequence within the Central region of human CHTF8. The exact sequence is proprietary.
Purification	The antibody was purified by immunogen affinity chromatography.
Molecular Weight	Predicted: 51 kD; Observed: 51 kD
Form/Buffer	Liquid in 0.42% Potassium phosphate, 0.87% Sodium chloride, pH 7.3, 30% glycerol, and 0.01% sodium azide.
Alternative Names	DERPC; Chromosome transmission fidelity protein 8 homolog isoform 2; Decreased expression in renal and prostate cancer protein
Gene Symbol	CHTF8
Entrez Gene	54921(Human)
SwissProt	POCG12(Human)

*AREX continuously optimizes our products. Webpage content may not reflect the latest updates. For inquiries, please contact info@arexbio.com or your local distributor.

*Clone Number, Reactivity, Source/Host and Clonality can be found in the product name and Key Features section above.

DATASHEET**CHTF8 Rabbit Polyclonal Antibody**

CAT. NO. APA19313

DATA

Western blot analysis of CHTF8 expression in U2OS (A), K562 (B) whole cell lysates. (Predicted band size: 51 kD; Observed band size: 51 kD)

STORAGE

Store at 4°C short term. For long term storage, store at -20°C, avoiding freeze/thaw cycles.

NOTE

For Research Use Only. Not for diagnostic, therapeutics, prophylactic or in vivo use.