

DATASHEET

LRCH4 Rabbit Polyclonal Antibody

CAT. NO. APA19320

KEY FEATURES

Target	LRCH4	Source / Host	Rabbit
Reactivity	Human	Clonality	Polyclonal
Applications	WB	Conjugation	Unconjugated
Form / Buffer	Liquid in 0.42% Potassium phosphate, 0.87% Sodium chloride, pH 7.3, 30% glycerol, and 0.01% sodium azide.		Storage at -20°C

BACKGROUND

Accessory protein that regulates signaling by multiple TLRs, acting as a broad-spanning regulator of the innate immune response. In macrophages, binds LPS and promotes proper docking of LPS in lipid raft membrane. May be required for lipid raft maintenance.

APPLICATION

To ensure optimal assay performance, AREX recommends conducting reagent titration tailored to each testing system for optimal detection results.

WB	1:500 - 1:1000
----	----------------

*Results are sample-specific. Please refer to your local assay conditions and test parameters for reference.

PRODUCT OVERVIEW

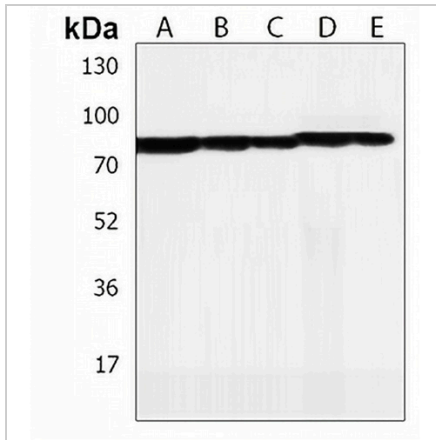
Description	Rabbit polyclonal antibody to LRCH4
Specificity	Recognizes endogenous levels of LRCH4 protein.
Antibody Type	Primary antibody
Immunogen	KLH-conjugated synthetic peptide encompassing a sequence within the Central region of human LRCH4. The exact sequence is proprietary.
Purification	The antibody was purified by immunogen affinity chromatography.
Molecular Weight	Predicted: 73 kD; Observed: 74 kD
Form/Buffer	Liquid in 0.42% Potassium phosphate, 0.87% Sodium chloride, pH 7.3, 30% glycerol, and 0.01% sodium azide.
Alternative Names	LRN; LRRN1; LRRN4; Leucine-rich repeat and calponin homology domain-containing protein 4; Leucine-rich repeat neuronal protein 4; Leucine-rich neuronal protein
Gene Symbol	LRCH4
Entrez Gene	4034(Human)
SwissProt	O75427(Human)

*AREX continuously optimizes our products. Webpage content may not reflect the latest updates. For inquiries, please contact info@arexbio.com or your local distributor.

*Clone Number, Reactivity, Source/Host and Clonality can be found in the product name and Key Features section above.

DATASHEET**LRCH4 Rabbit Polyclonal Antibody**

CAT. NO. APA19320

DATA

Western blot analysis of LRCH4 expression in HeLa (A), HL60 (B), THP1 (C), CCRFCEM (D), SHSY5Y (E) whole cell lysates. (Predicted band size: 73 kD; Observed band size: 74 kD)

STORAGE

Store at 4°C short term. For long term storage, store at -20°C, avoiding freeze/thaw cycles.

NOTE

For Research Use Only. Not for diagnostic, therapeutics, prophylactic or in vivo use.