

DATASHEET

CCDC144A Rabbit Polyclonal Antibody

CAT. NO. APA19322

KEY FEATURES

Target	CCDC144A	Source / Host	Rabbit
Reactivity	Human	Clonality	Polyclonal
Applications	WB	Conjugation	Unconjugated
Form / Buffer	Liquid in 0.42% Potassium phosphate, 0.87% Sodium chloride, pH 7.3, 30% glycerol, and 0.01% sodium azide.		Storage at -20°C

BACKGROUND

May play a role in preventing the formation of kidney stones through inhibition of calcium oxalate monohydrate (COM) crystallization, attenuating COM-induced apoptotic injury to renal epithelial cells crystallization, attenuating COM-induced apoptotic injury to renal epithelial cells . May exhibit antilithiatic (preventing the formation of kidney stones) activity through crystal binding, hindering the crystal attachment to renal epithelial cells, a pre-requisite to initiate inflammatory response .

APPLICATION

To ensure optimal assay performance, AREX recommends conducting reagent titration tailored to each testing system for optimal detection results.

WB	1:500 - 1:1000
----	----------------

*Results are sample-specific. Please refer to your local assay conditions and test parameters for reference.

PRODUCT OVERVIEW

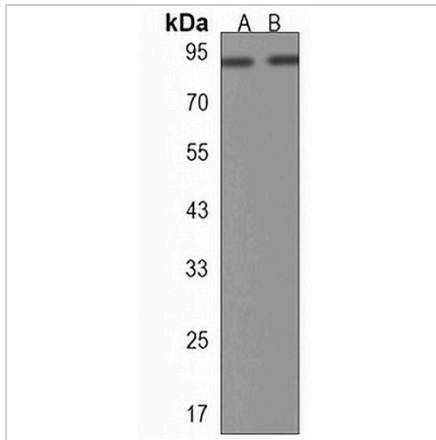
Description	Rabbit polyclonal antibody to CCDC144A
Specificity	Recognizes endogenous levels of CCDC144A protein.
Antibody Type	Primary antibody
Immunogen	KLH-conjugated synthetic peptide encompassing a sequence within the Central region of human CCDC144A. The exact sequence is proprietary.
Purification	The antibody was purified by immunogen affinity chromatography.
Molecular Weight	Predicted: 165 kD; Observed: 88 kD
Form/Buffer	Liquid in 0.42% Potassium phosphate, 0.87% Sodium chloride, pH 7.3, 30% glycerol, and 0.01% sodium azide.
Alternative Names	KIAA0565; Coiled-coil domain-containing protein 144A
Gene Symbol	CCDC144A
Entrez Gene	9720(Human)
SwissProt	A2RUR9(Human)

*AREX continuously optimizes our products. Webpage content may not reflect the latest updates. For inquiries, please contact info@arexbio.com or your local distributor.

*Clone Number, Reactivity, Source/Host and Clonality can be found in the product name and Key Features section above.

DATASHEET**CCDC144A Rabbit Polyclonal Antibody**

CAT. NO. APA19322

DATA

Western blot analysis of CCDC144A expression in human brain (A), HL60 (B) whole cell lysates. (Predicted band size: 165 kD; Observed band size: 88 kD)

STORAGE

Store at 4°C short term. For long term storage, store at -20°C, avoiding freeze/thaw cycles.

NOTE

For Research Use Only. Not for diagnostic, therapeutics, prophylactic or in vivo use.