

## DATASHEET

# UHRF1BP1 Rabbit Polyclonal Antibody

CAT. NO. APA19323

### KEY FEATURES

Target	UHRF1BP1	Source / Host	Rabbit
Reactivity	Human	Clonality	Polyclonal
Applications	WB	Conjugation	Unconjugated
Form / Buffer	Liquid in 0.42% Potassium phosphate, 0.87% Sodium chloride, pH 7.3, 30% glycerol, and 0.01% sodium azide.		Storage at -20°C

### BACKGROUND

Tube-forming lipid transport protein which probably mediates the transfer of lipids between membranes at organelle contact sites. May be involved in the retrograde traffic of vesicle clusters in the endocytic pathway to the Golgi complex.

### APPLICATION

To ensure optimal assay performance, AREX recommends conducting reagent titration tailored to each testing system for optimal detection results.

WB	1:500 - 1:1000
----	----------------

\*Results are sample-specific. Please refer to your local assay conditions and test parameters for reference.

### PRODUCT OVERVIEW

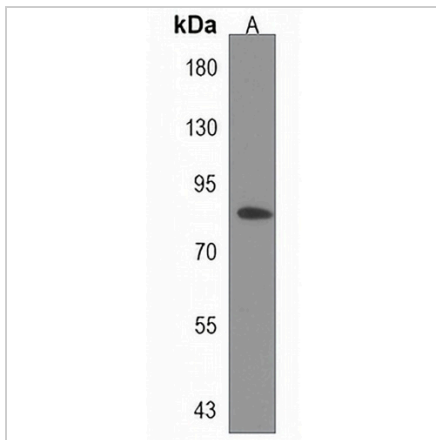
Description	Rabbit polyclonal antibody to UHRF1BP1
Specificity	Recognizes endogenous levels of UHRF1BP1 protein.
Antibody Type	Primary antibody
Immunogen	KLH-conjugated synthetic peptide encompassing a sequence within the Central region of human UHRF1BP1. The exact sequence is proprietary.
Purification	The antibody was purified by immunogen affinity chromatography.
Molecular Weight	Predicted: 159 kD; Observed: 80 kD
Form/Buffer	Liquid in 0.42% Potassium phosphate, 0.87% Sodium chloride, pH 7.3, 30% glycerol, and 0.01% sodium azide.
Alternative Names	C6orf107; UHRF1-binding protein 1; ICBP90-binding protein 1; Ubiquitin-like containing PHD and RING finger domains 1-binding protein 1
Gene Symbol	UHRF1BP1
Entrez Gene	54887(Human)
SwissProt	Q6BDS2(Human)

\*AREX continuously optimizes our products. Webpage content may not reflect the latest updates. For inquiries, please contact [info@arexbio.com](mailto:info@arexbio.com) or your local distributor.

\*Clone Number, Reactivity, Source/Host and Clonality can be found in the product name and Key Features section above.

**DATASHEET****UHRF1BP1 Rabbit Polyclonal Antibody**

CAT. NO. APA19323

**DATA**

Western blot analysis of UHRF1BP1 expression in A431 (A) whole cell lysates. (Predicted band size: 159 kD; Observed band size: 80 kD)

**STORAGE**

Store at 4°C short term. For long term storage, store at -20°C, avoiding freeze/thaw cycles.

**NOTE**

For Research Use Only. Not for diagnostic, therapeutics, prophylactic or in vivo use.