

**DATASHEET**

**CTB Rabbit Polyclonal Antibody**

CAT. NO. APA19330

**KEY FEATURES**

Target	CTB	Source / Host	Rabbit
Reactivity	Human, Mouse	Clonality	Polyclonal
Applications	WB	Conjugation	Unconjugated
Form / Buffer	Liquid in 0.42% Potassium phosphate, 0.87% Sodium chloride, pH 7.3, 30% glycerol, and 0.01% sodium azide.		Storage at -20°C

**BACKGROUND**

Reducing-end exoglycosidase involved in glycan degradation . Hydrolyzes N,N'-diacetylchitobiose (GlnNAc2) and higher chitin-oligosaccharides (GlcNAc(n)) to monomeric GlcNAc acting on reducing-end residues . During N-linked glycoprotein degradation, it cleaves single GlcNAc molecules uniquely from the reducing end of N,N'-diacetylchitobiose units linking oligosaccharides to proteins, and therefore it functions after cleavage of the Asn-GlcNAc bond and asparagine removal by glycosylasparaginase .

**APPLICATION**

To ensure optimal assay performance, AREX recommends conducting reagent titration tailored to each testing system for optimal detection results.

WB	1:500 - 1:1000
----	----------------

\*Results are sample-specific. Please refer to your local assay conditions and test parameters for reference.

**PRODUCT OVERVIEW**

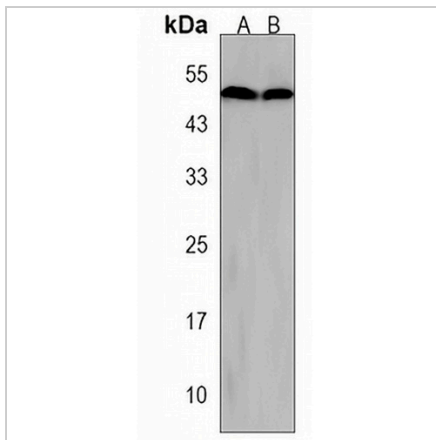
Description	Rabbit polyclonal antibody to CTB
Specificity	Recognizes endogenous levels of CTB protein.
Antibody Type	Primary antibody
Immunogen	KLH-conjugated synthetic peptide encompassing a sequence within the Central region of human CTB. The exact sequence is proprietary.
Purification	The antibody was purified by immunogen affinity chromatography.
Molecular Weight	Predicted: 43 kD; Observed: 50 kD
Form/Buffer	Liquid in 0.42% Potassium phosphate, 0.87% Sodium chloride, pH 7.3, 30% glycerol, and 0.01% sodium azide.
Alternative Names	CTB; Di-N-acetylchitobiase
Gene Symbol	CTBS
Entrez Gene	1486(Human); 74245(Mouse)
SwissProt	Q01459(Human); Q8R242(Mouse)

\*AREX continuously optimizes our products. Webpage content may not reflect the latest updates. For inquiries, please contact [info@arexbio.com](mailto:info@arexbio.com) or your local distributor.

\*Clone Number, Reactivity, Source/Host and Clonality can be found in the product name and Key Features section above.

**DATASHEET****CTB Rabbit Polyclonal Antibody**

CAT. NO. APA19330

**DATA**

Western blot analysis of CTB expression in human liver (A), mouse liver (B) whole cell lysates. (Predicted band size: 43 kD; Observed band size: 50 kD)

**STORAGE**

Store at 4°C short term. For long term storage, store at -20°C, avoiding freeze/thaw cycles.

**NOTE**

For Research Use Only. Not for diagnostic, therapeutics, prophylactic or in vivo use.