

DATASHEET

TMEM106B Rabbit Polyclonal Antibody

CAT. NO. APA19340

KEY FEATURES

Target	TMEM106B	Source / Host	Rabbit
Reactivity	Human, Mouse	Clonality	Polyclonal
Applications	WB, FC	Conjugation	Unconjugated
Form / Buffer	Liquid in 0.42% Potassium phosphate, 0.87% Sodium chloride, pH 7.3, 30% glycerol, and 0.01% sodium azide.		Storage at -20°C

BACKGROUND

In neurons, involved in the transport of late endosomes/lysosomes . May be involved in dendrite morphogenesis and maintenance by regulating lysosomal trafficking . May act as a molecular brake for retrograde transport of late endosomes/lysosomes, possibly via its interaction with MAP6 . In motoneurons, may mediate the axonal transport of lysosomes and axonal sorting at the initial segment . It remains unclear whether TMEM106B affects the transport of moving lysosomes in the anterograde or retrograde direction in neurites and whether it is important in the sorting of lysosomes in axons or in dendrites . In neurons, may also play a role in the regulation of lysosomal size and responsiveness to stress . Required for proper lysosomal acidification .

APPLICATION

To ensure optimal assay performance, AREX recommends conducting reagent titration tailored to each testing system for optimal detection results.

WB	1:500 - 1:1000
FC	1:10 - 1:30

*Results are sample-specific. Please refer to your local assay conditions and test parameters for reference.

PRODUCT OVERVIEW

Description	Rabbit polyclonal antibody to TMEM106B
Specificity	Recognizes endogenous levels of TMEM106B protein.
Antibody Type	Primary antibody
Immunogen	KLH-conjugated synthetic peptide encompassing a sequence within the Central region of human TMEM106B. The exact sequence is proprietary.
Purification	The antibody was purified by immunogen affinity chromatography.
Molecular Weight	Predicted: 31 kD; Observed: 70 kD
Form/Buffer	Liquid in 0.42% Potassium phosphate, 0.87% Sodium chloride, pH 7.3, 30% glycerol, and 0.01% sodium azide.
Alternative Names	Transmembrane protein 106B
Gene Symbol	TMEM106B
Entrez Gene	54664(Human); 71900(Mouse)
SwissProt	Q9NUM4(Human); Q80X71(Mouse)

*AREX continuously optimizes our products. Webpage content may not reflect the latest updates. For inquiries, please contact info@arexbio.com or your local distributor.

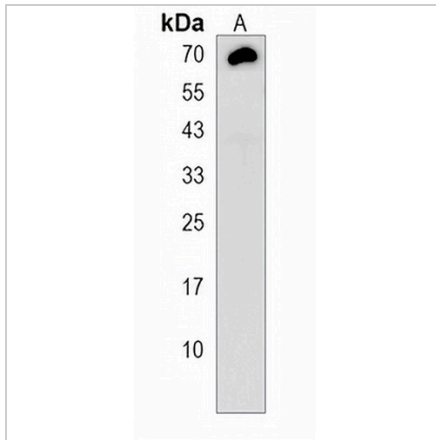
*Clone Number, Reactivity, Source/Host and Clonality can be found in the product name and Key Features section above.

DATASHEET

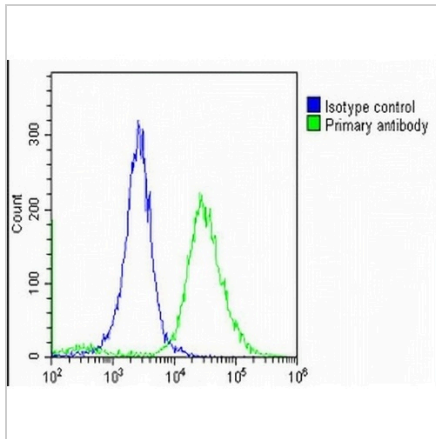
TMEM106B Rabbit Polyclonal Antibody

CAT. NO. APA19340

DATA



Western blot analysis of TMEM106B expression in mouse brain (A) whole cell lysates. (Predicted band size: 31 kD; Observed band size: 70 kD)



Flow cytometric analysis of HeLa cells using Anti-TMEM106B Antibody. The cells were fixed with 2% paraformaldehyde (10 min) and then permeabilized with 90% methanol for 10 min. The cells were incubated in 2% bovine serum albumin to block non-specific protein-protein interactions followed by the antibody at 37 °C for 60 min. The secondary antibody Goat Anti-Rabbit IgG (H&L) - AREX® Fluor 488 was incubated at 37 °C for 40 min. Isotype control antibody (blue line) was used under the same condition.

STORAGE

Store at 4°C short term. For long term storage, store at -20°C, avoiding freeze/thaw cycles.

NOTE

For Research Use Only. Not for diagnostic, therapeutics, prophylactic or in vivo use.