

DATASHEET

BIRC6 Rabbit Polyclonal Antibody

CAT. NO. APA19342

KEY FEATURES

Target	BIRC6	Source / Host	Rabbit
Reactivity	Human	Clonality	Polyclonal
Applications	WB, FC	Conjugation	Unconjugated
Form / Buffer	Liquid in 0.42% Potassium phosphate, 0.87% Sodium chloride, pH 7.3, 30% glycerol, and 0.01% sodium azide.		Storage at -20°C

BACKGROUND

Anti-apoptotic protein known as inhibitor of apoptosis (IAP) which can regulate cell death by controlling caspases and by acting as an E3 ubiquitin-protein ligase which can regulate cell death by controlling caspases and by acting as an E3 ubiquitin-protein ligase. Unlike most IAPs, does not contain a RING domain and it is not a RING-type E3 ligase. Instead acts as a dual E2/E3 enzyme that combines ubiquitin conjugating (E2) and ubiquitin ligase (E3) activities in a single polypeptide. Ubiquitination is mediated by a non-canonical E1 ubiquitin activating enzyme UBA6. Ubiquitinates CASP3, CASP7 and CASP9 and inhibits their caspase activity; also ubiquitinates their procaspases but to a weaker extent. Ubiquitinates pro-apoptotic factors DIABLO/SMAC and HTRA2.

APPLICATION

To ensure optimal assay performance, AREX recommends conducting reagent titration tailored to each testing system for optimal detection results.

WB	1:500 - 1:1000
FC	1:10 - 1:30

*Results are sample-specific. Please refer to your local assay conditions and test parameters for reference.

PRODUCT OVERVIEW

Description	Rabbit polyclonal antibody to BIRC6
Specificity	Recognizes endogenous levels of BIRC6 protein.
Antibody Type	Primary antibody
Immunogen	KLH-conjugated synthetic peptide encompassing a sequence within the C-terminal region of human BIRC6. The exact sequence is proprietary.
Purification	The antibody was purified by immunogen affinity chromatography.
Molecular Weight	Predicted: 530 kD; Observed: 530 kD
Form/Buffer	Liquid in 0.42% Potassium phosphate, 0.87% Sodium chloride, pH 7.3, 30% glycerol, and 0.01% sodium azide.
Alternative Names	KIAA1289; Baculoviral IAP repeat-containing protein 6; BIR repeat-containing ubiquitin-conjugating enzyme; BRUCE; Ubiquitin-conjugating BIR domain enzyme apollon; APOLLON
Gene Symbol	BIRC6
Entrez Gene	57448(Human)
SwissProt	Q9NR09(Human)

*AREX continuously optimizes our products. Webpage content may not reflect the latest updates. For inquiries, please contact info@arexbio.com or your local distributor.

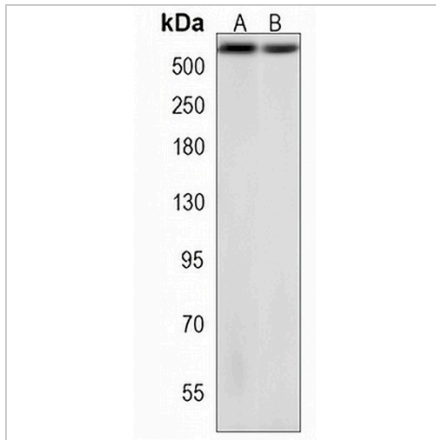
*Clone Number, Reactivity, Source/Host and Clonality can be found in the product name and Key Features section above.

DATASHEET

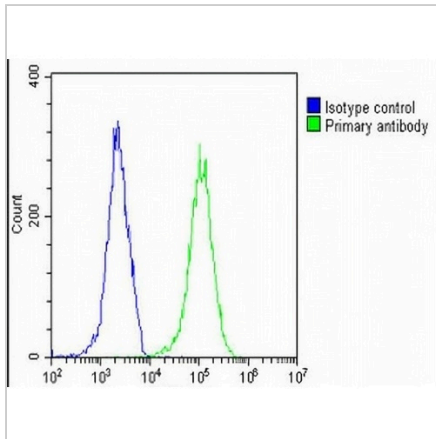
BIRC6 Rabbit Polyclonal Antibody

CAT. NO. APA19342

DATA



Western blot analysis of BIRC6 expression in SHSY5Y (A), HeLa (B) whole cell lysates. (Predicted band size: 530 kD; Observed band size: 530 kD)



Flow cytometric analysis of HeLa cells using Anti-BIRC6 Antibody. The cells were fixed with 2% paraformaldehyde (10 min) and then permeabilized with 90% methanol for 10 min. The cells were incubated in 2% bovine serum albumin to block non-specific protein-protein interactions followed by the antibody at 37 °C for 60 min. The secondary antibody Goat Anti-Rabbit IgG (H&L) - AREX® Fluor 488 was incubated at 37 °C for 40 min. Isotype control antibody (blue line) was used under the same condition.

STORAGE

Store at 4°C short term. For long term storage, store at -20°C, avoiding freeze/thaw cycles.

NOTE

For Research Use Only. Not for diagnostic, therapeutics, prophylactic or in vivo use.