

DATASHEET

IFI27 Rabbit Polyclonal Antibody

CAT. NO. APA19348

KEY FEATURES

Target	IFI27	Source / Host	Rabbit
Reactivity	Human	Clonality	Polyclonal
Applications	WB	Conjugation	Unconjugated
Form / Buffer	Liquid in 0.42% Potassium phosphate, 0.87% Sodium chloride, pH 7.3, 30% glycerol, and 0.01% sodium azide.		Storage at -20°C

BACKGROUND

Probable adapter protein involved in different biological processes . Part of the signaling pathways that lead to apoptosis . Involved in type-I interferon-induced apoptosis characterized by a rapid and robust release of cytochrome C from the mitochondria and activation of BAX and caspases 2, 3, 6, 8 and 9 . Also functions in TNFSF10-induced apoptosis . May also have a function in the nucleus, where it may be involved in the interferon-induced negative regulation of the transcriptional activity of NR4A1, NR4A2 and NR4A3 through the enhancement of XPO1-mediated nuclear export of these nuclear receptors . May thereby play a role in the vascular response to injury . In the innate immune response, has an antiviral activity towards hepatitis C virus/HCV .

APPLICATION

To ensure optimal assay performance, AREX recommends conducting reagent titration tailored to each testing system for optimal detection results.

WB	1:500 - 1:1000
----	----------------

*Results are sample-specific. Please refer to your local assay conditions and test parameters for reference.

PRODUCT OVERVIEW

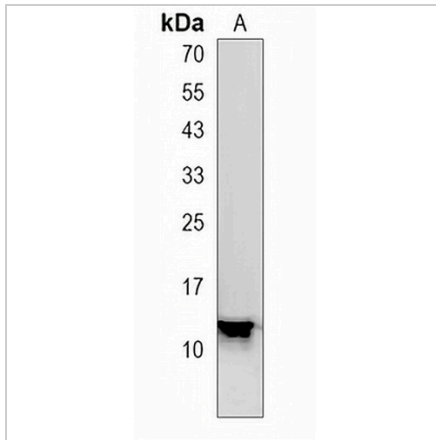
Description	Rabbit polyclonal antibody to IFI27
Specificity	Recognizes endogenous levels of IFI27 protein.
Antibody Type	Primary antibody
Immunogen	KLH-conjugated synthetic peptide encompassing a sequence within the Central region of human IFI27. The exact sequence is proprietary.
Purification	The antibody was purified by immunogen affinity chromatography.
Molecular Weight	Predicted: 11 kD; Observed: 13 kD
Form/Buffer	Liquid in 0.42% Potassium phosphate, 0.87% Sodium chloride, pH 7.3, 30% glycerol, and 0.01% sodium azide.
Alternative Names	Interferon alpha-inducible protein 27, mitochondrial; p27; Interferon alpha-induced 11.5 kDa protein; Interferon-stimulated gene 12a protein; ISG12(a)
Gene Symbol	IFI27
Entrez Gene	3429(Human)
SwissProt	P40305(Human)

*AREX continuously optimizes our products. Webpage content may not reflect the latest updates. For inquiries, please contact info@arexbio.com or your local distributor.

*Clone Number, Reactivity, Source/Host and Clonality can be found in the product name and Key Features section above.

DATASHEET**IFI27 Rabbit Polyclonal Antibody**

CAT. NO. APA19348

DATA

Western blot analysis of IFI27 expression in human spleen (A) whole cell lysates.
(Predicted band size: 11 kD; Observed band size: 13 kD)

STORAGE

Store at 4°C short term. For long term storage, store at -20°C, avoiding freeze/thaw cycles.

NOTE

For Research Use Only. Not for diagnostic, therapeutics, prophylactic or in vivo use.